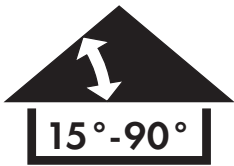


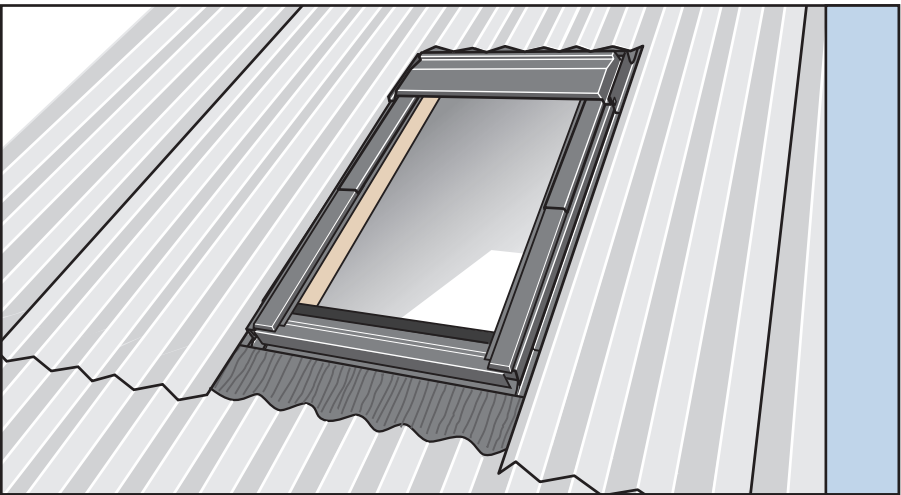
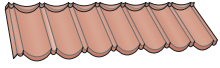
**INSTRUCTIONS FOR THE INSTALLER
OF VELUX ROOF WINDOW AND FLASHING**



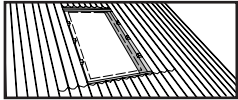
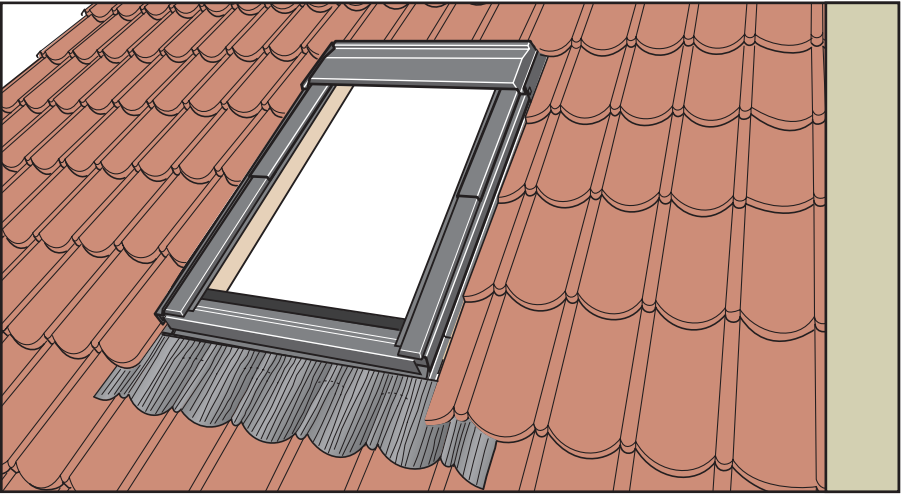
Important: Read installation instructions before installing



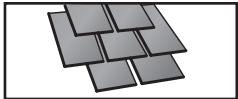
EDW Flashing with Metal Roof or Tiles

EDW Flashing with DECRA, HARVEY or CORONA pressed metal roofing



Installation in existing metal roof see page 25



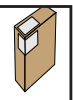
EDL flashing for slate and shingle: see page 27

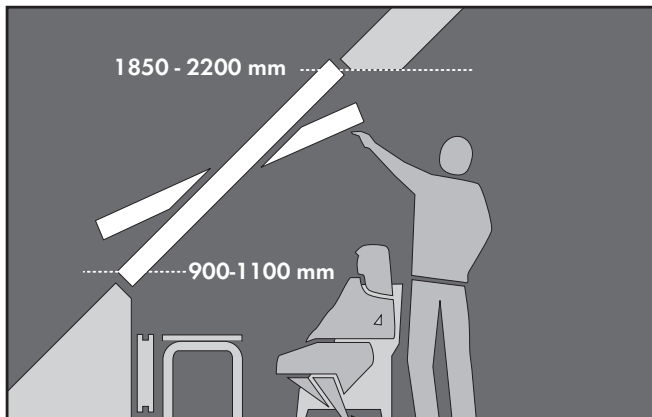


See the back for information on maintenance and VELUX ACCESSORIES

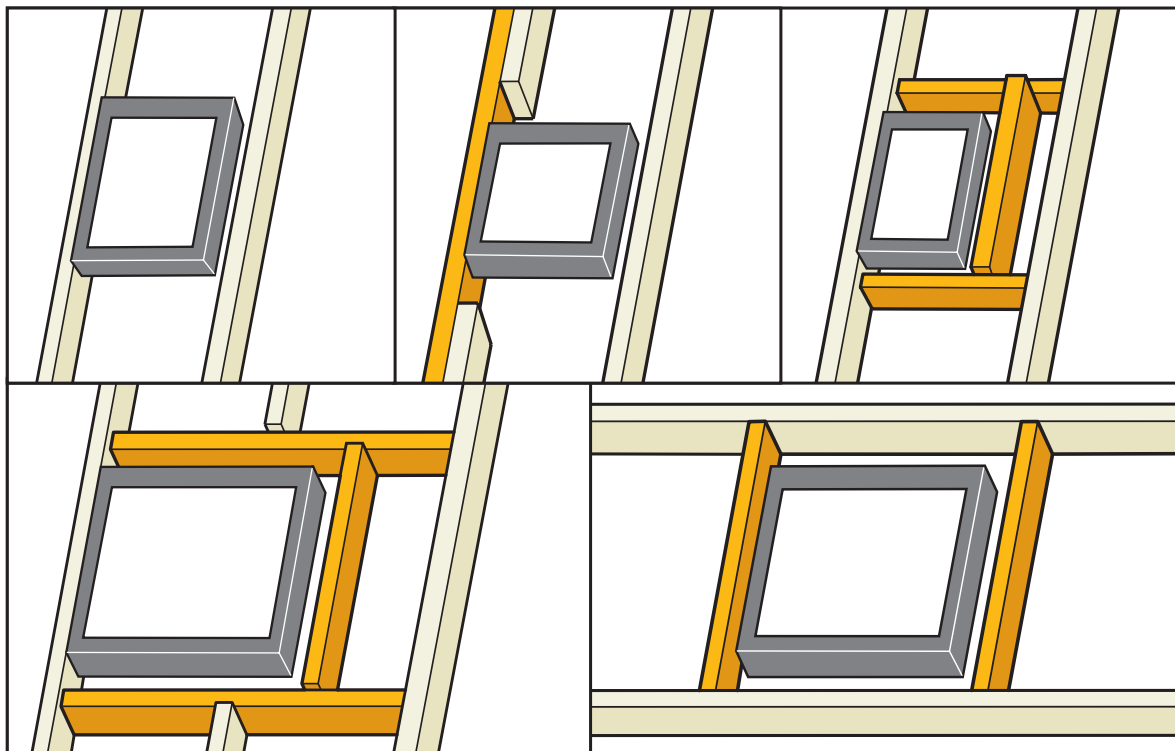


If using combi flashings, please check label on combi flashing carton for information on frame distance



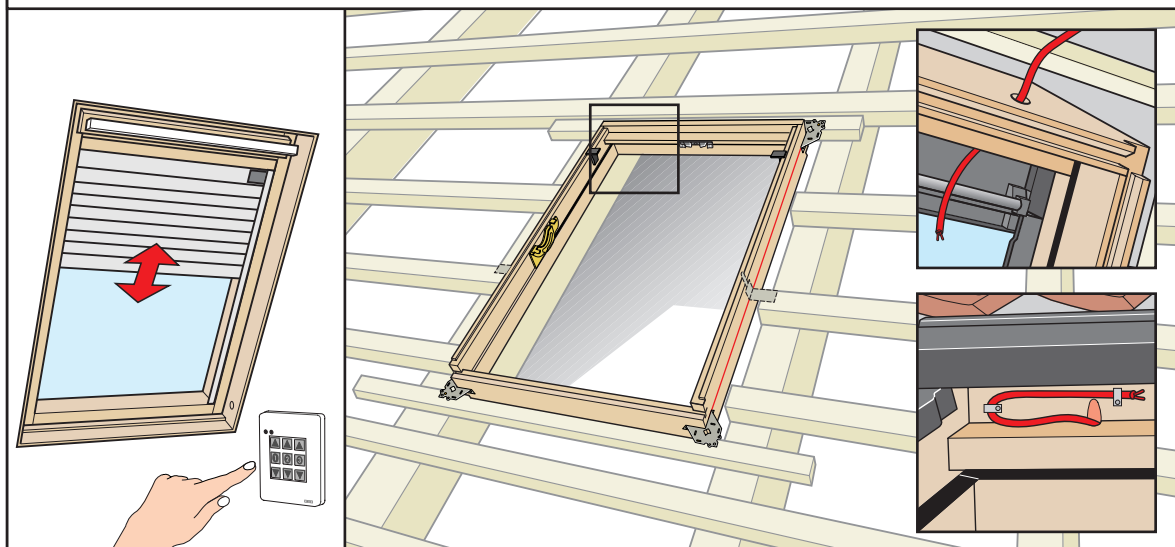


For applications with-in reach, position roof window at a height which will allow easy operation of the control bar, (1850-2200 mm from floor to top of frame). Try also to allow for a clear view when standing or when seated.



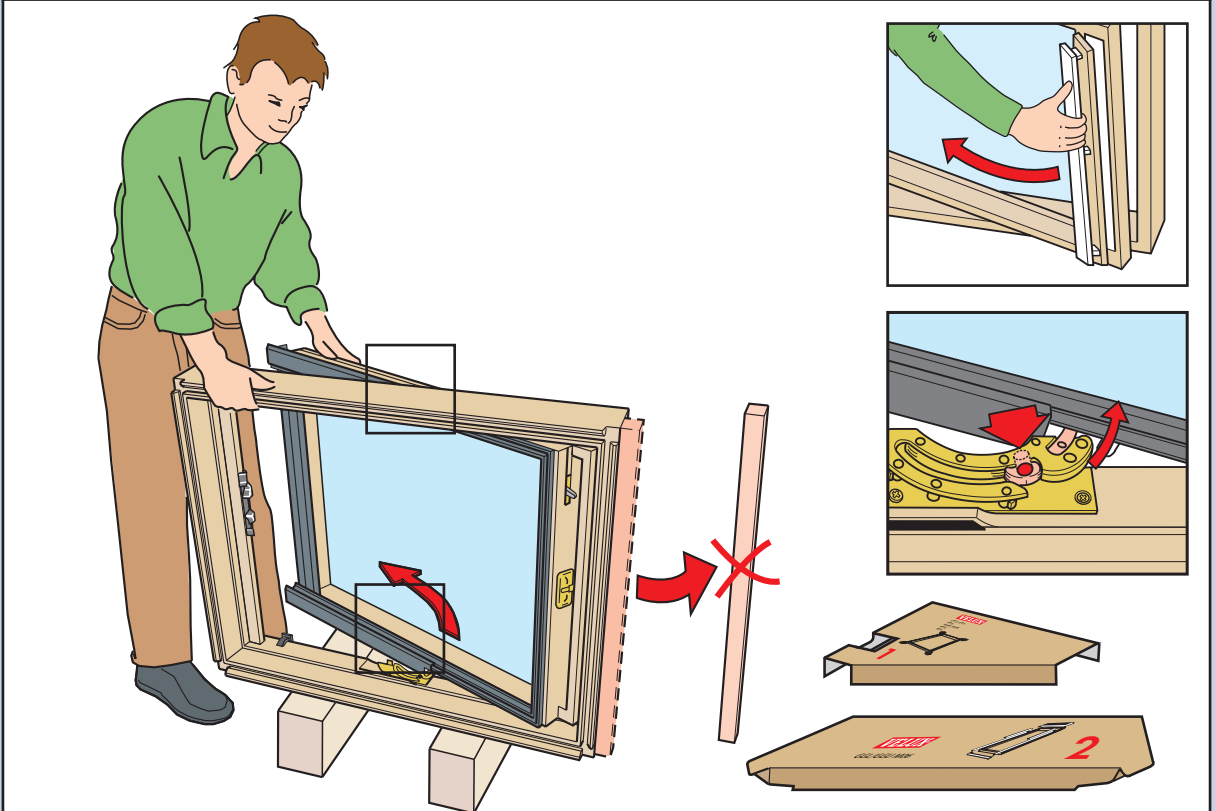
Electrical accessories: For subsequent installation of electrical accessories it is recommended to fit one cable per desired electrical function.

Run the cable(s) through the pre-drilled hole in the top frame and leave 0.2 m at window and the rest at accessible place for subsequent connection to a control unit. For cables up to 40 m, use eg a cable with dimensions 2 x 1,5 mm².

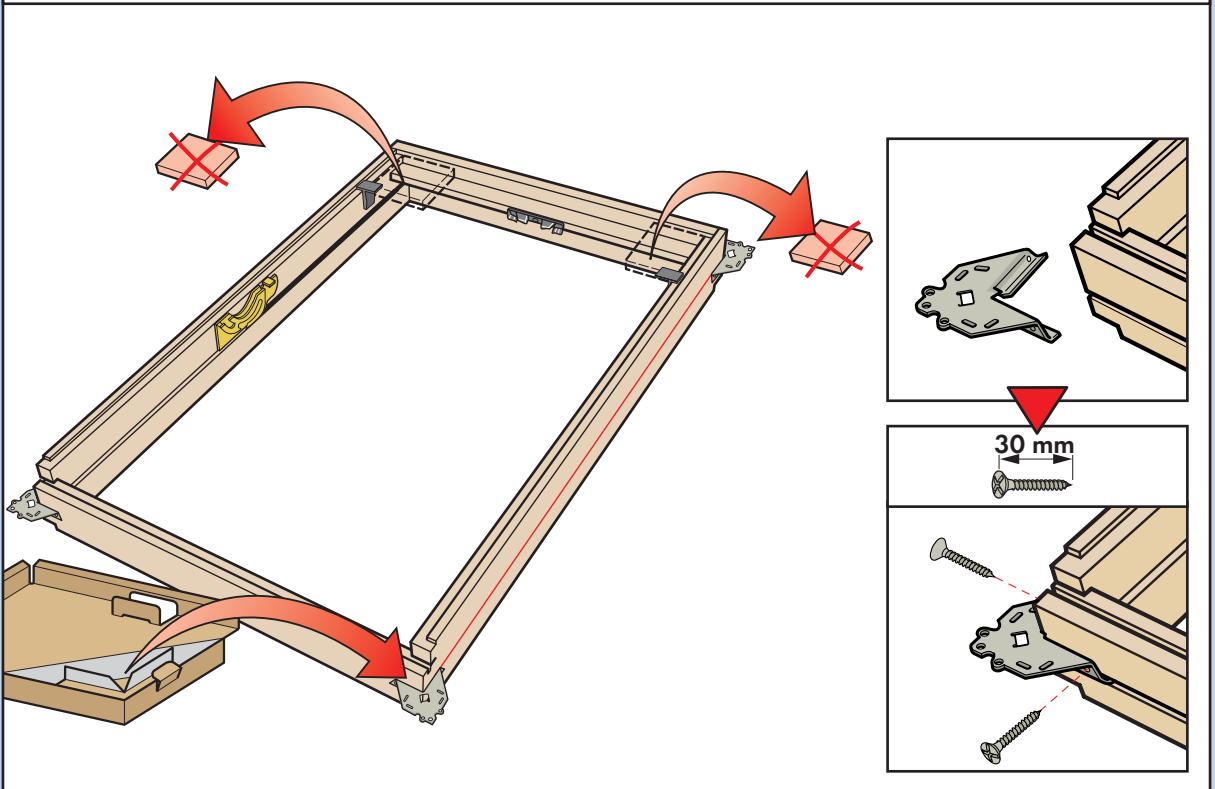


Metal Roof or Tiles + EDW Flashing

- 1** The sash may be removed to simplify installation. Press in push button, eg with a screwdriver. Remove transportation batten.



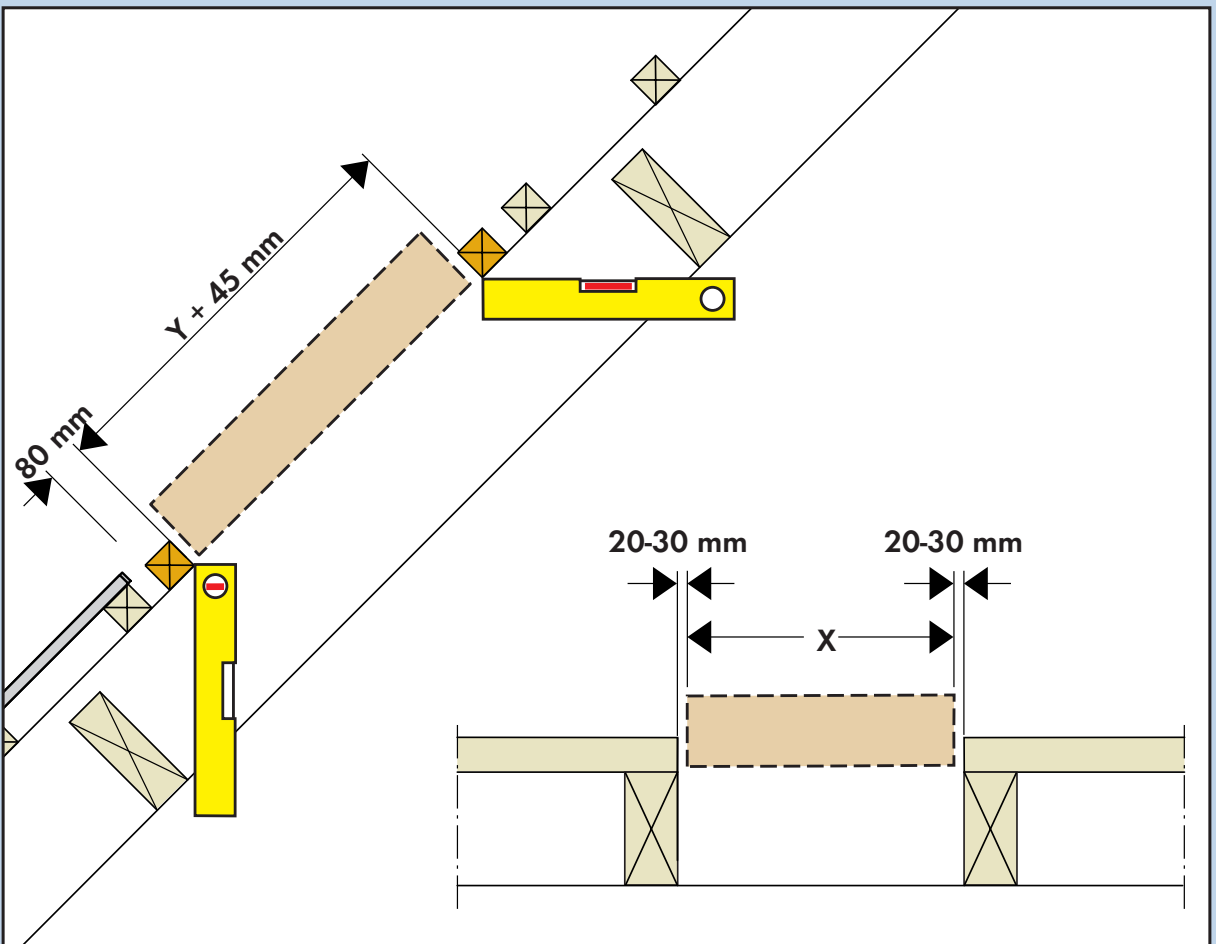
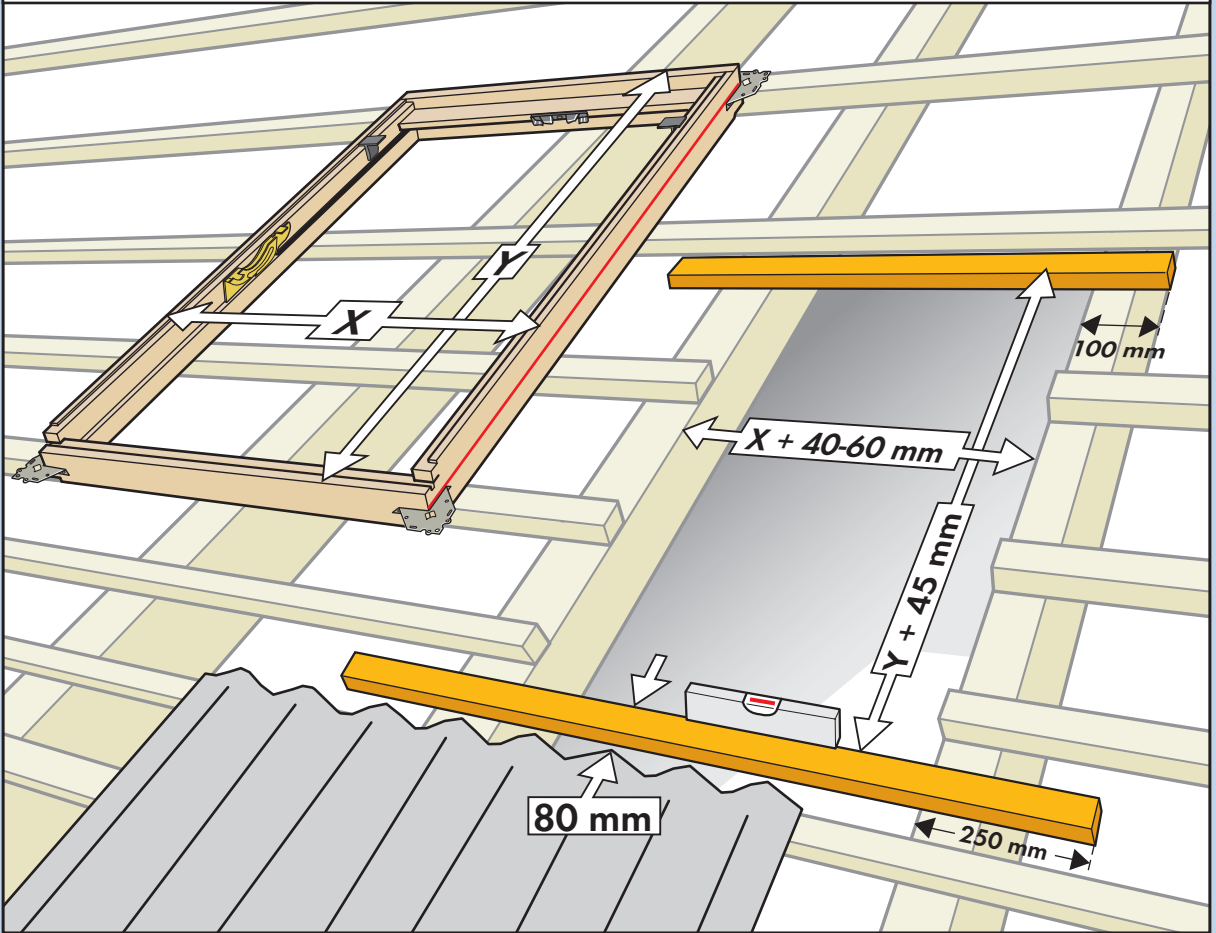
- 2** Fix brackets into the groove on the frame corners with two screws. Remove transportation blocks.



3a



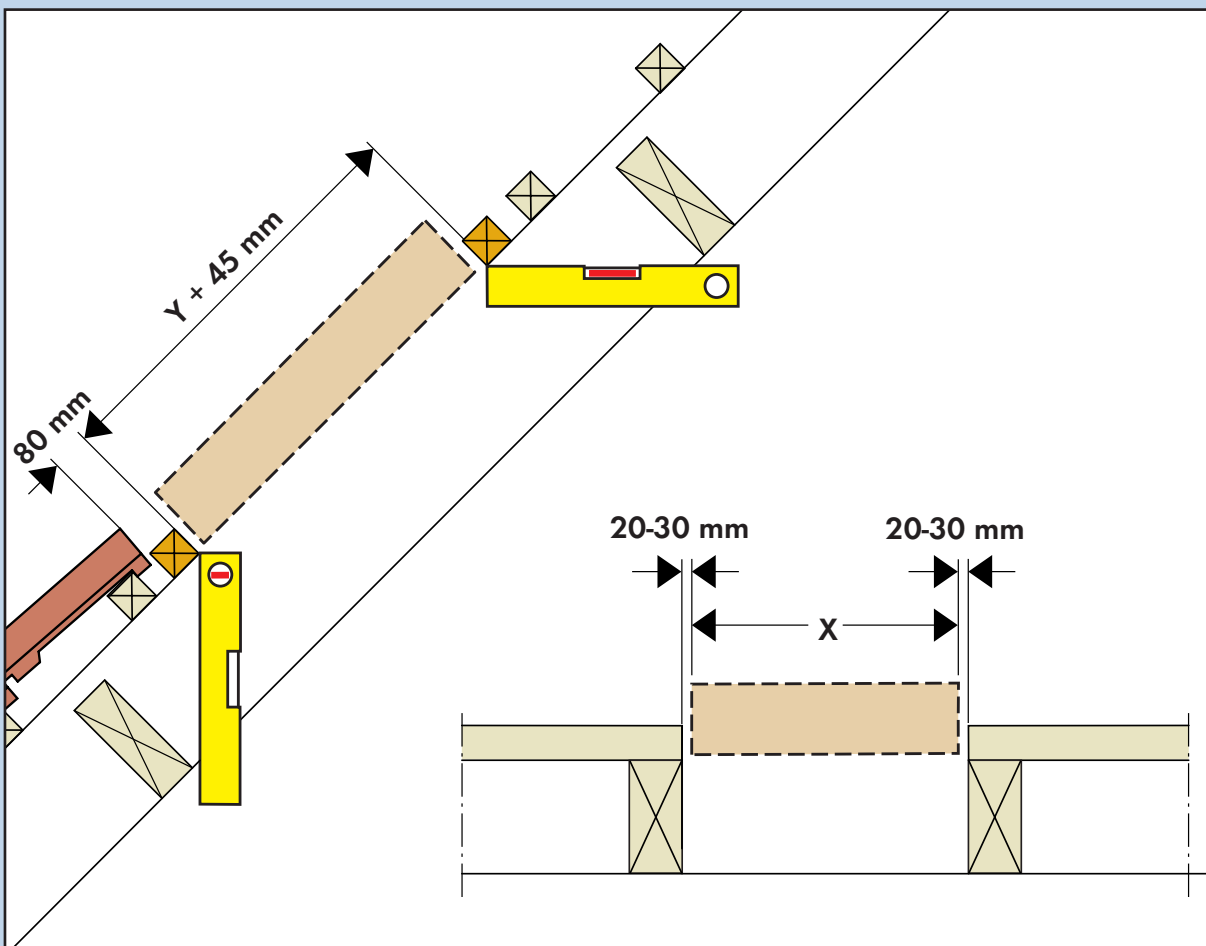
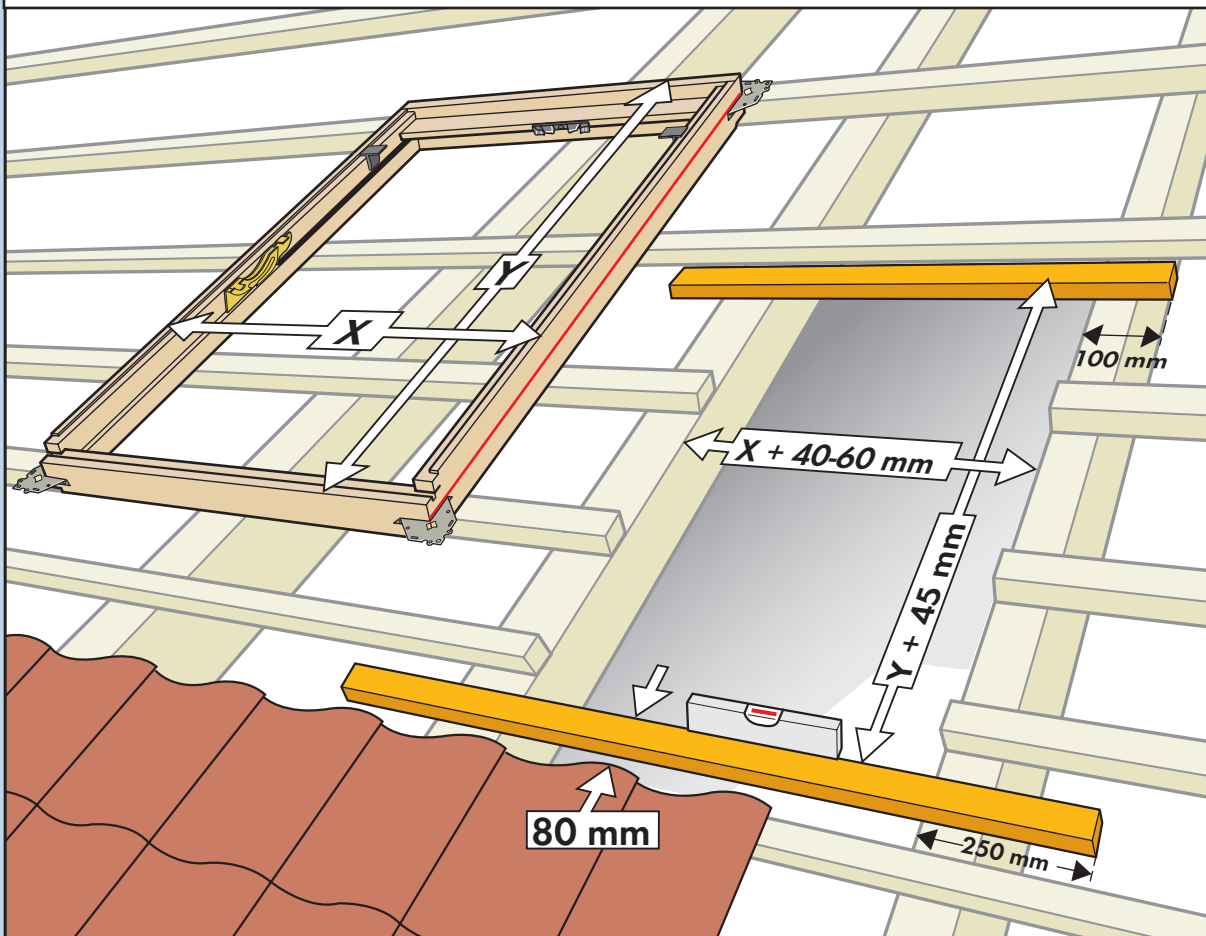
Metal roof on batten construction:
Position window in roof as detailed below.



3b

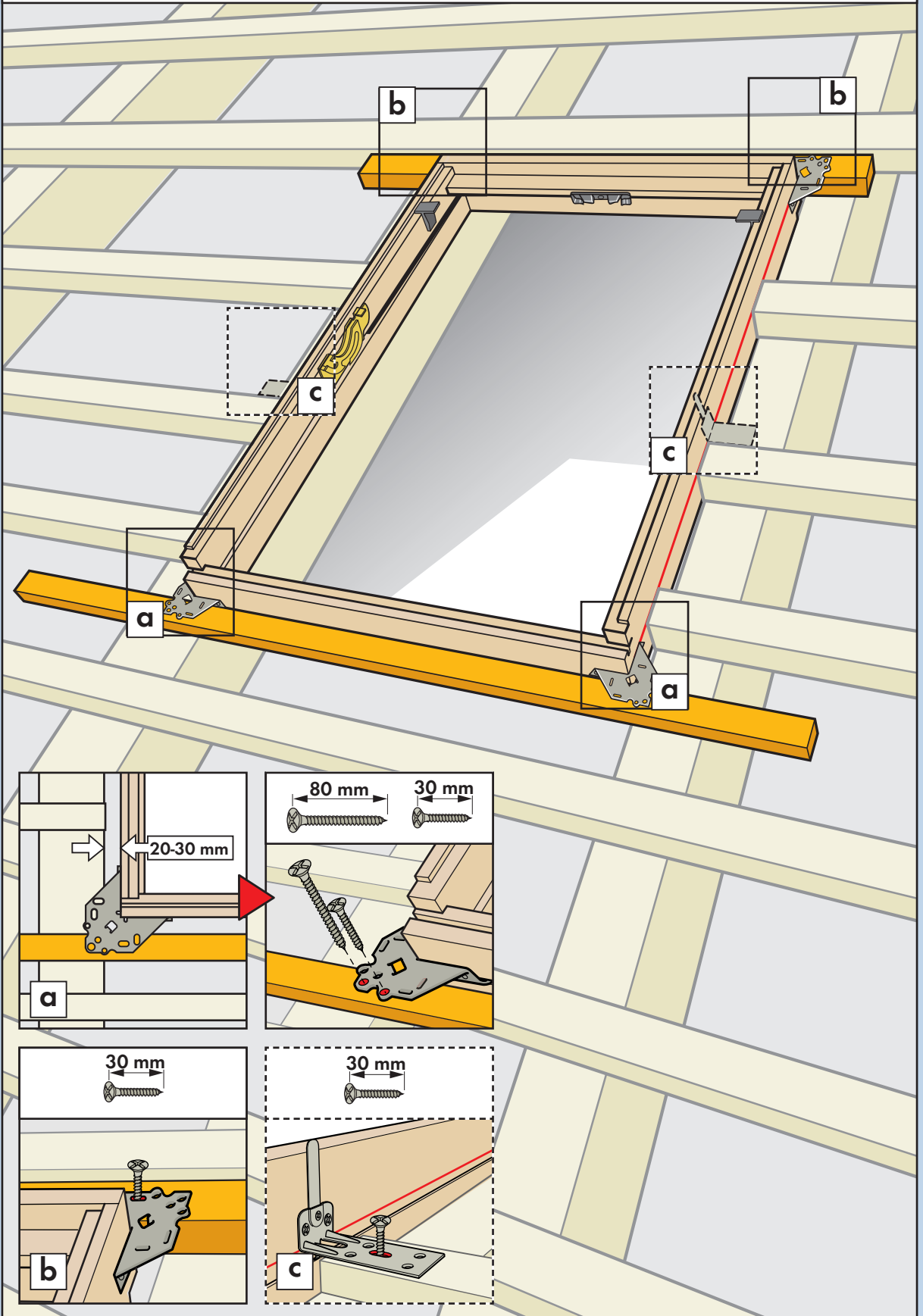


Profiled roofing material on batten construction:
Position window in roof as detailed below.



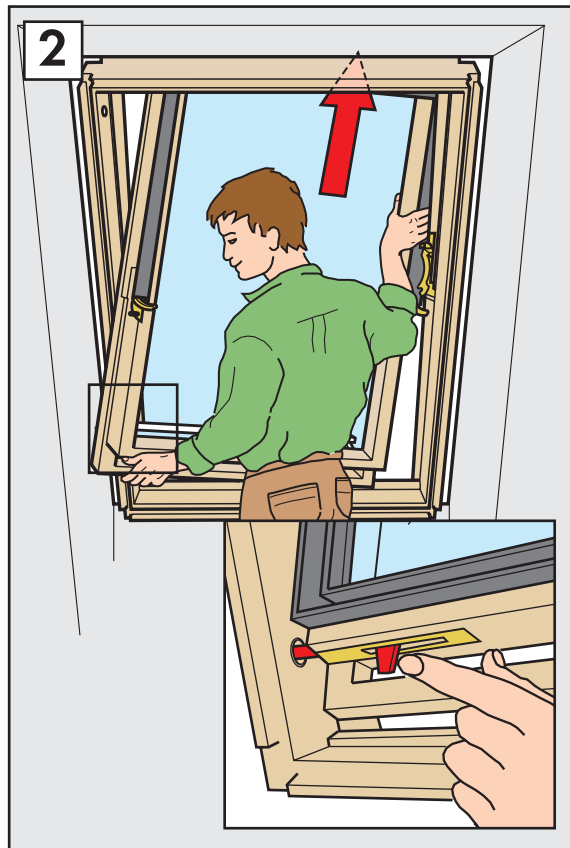
Attachment of roof window

- 4** Fix lower brackets to rafter with two screws in the round holes (**a**), and top brackets with one screw, loosely in slot to allow for adjustment (**b**). Long windows are supplied with extra brackets, which should be fitted as shown (**c**)



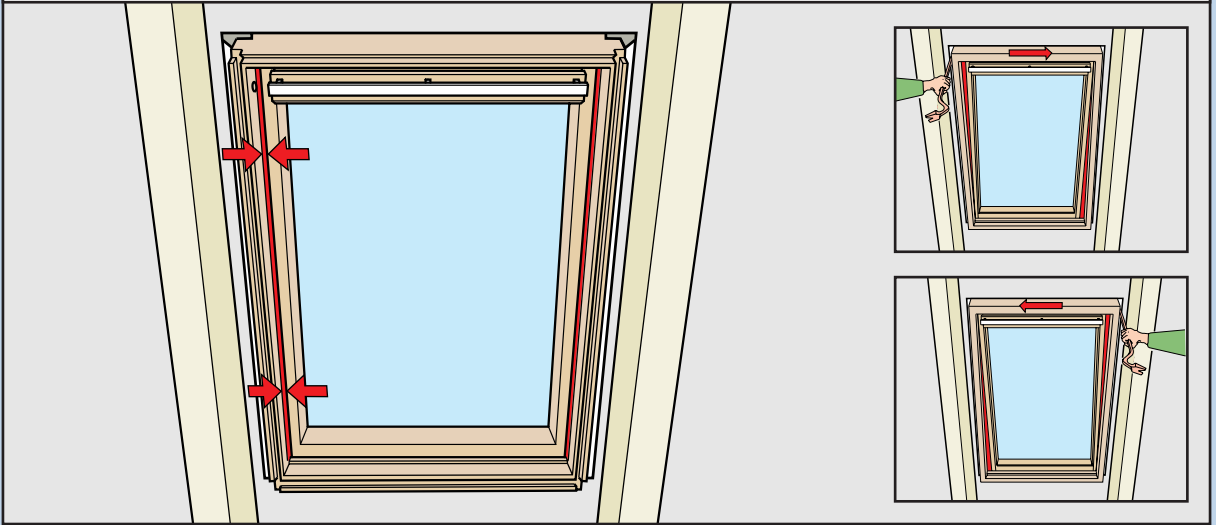
Replace sash

5 Replace sash, if removed earlier. The push button is automatically released, when the window is closed.

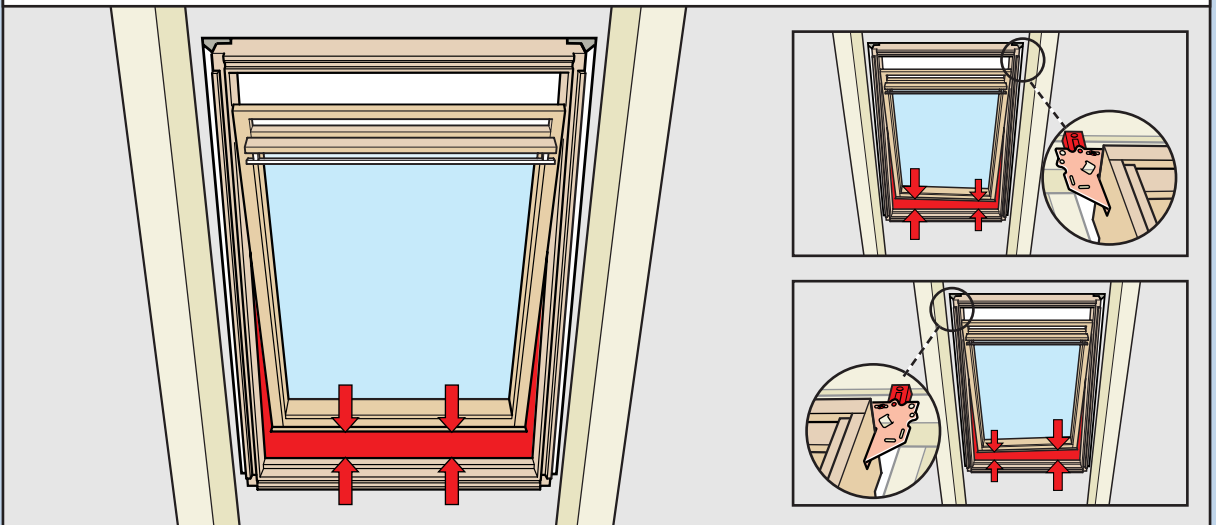


Adjustment and final attachment of roof window

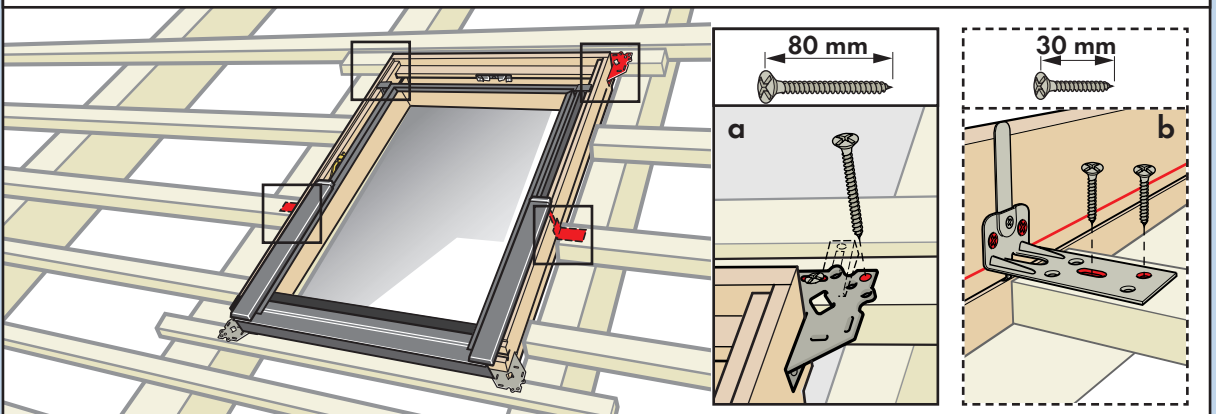
- 6** Adjust distance between frame and sash to ensure an even gap at each side.



- 7** If uneven rafters cause the frame to twist, adjust using the wedge supplied to ensure an even gap between bottom frame and bottom sash.

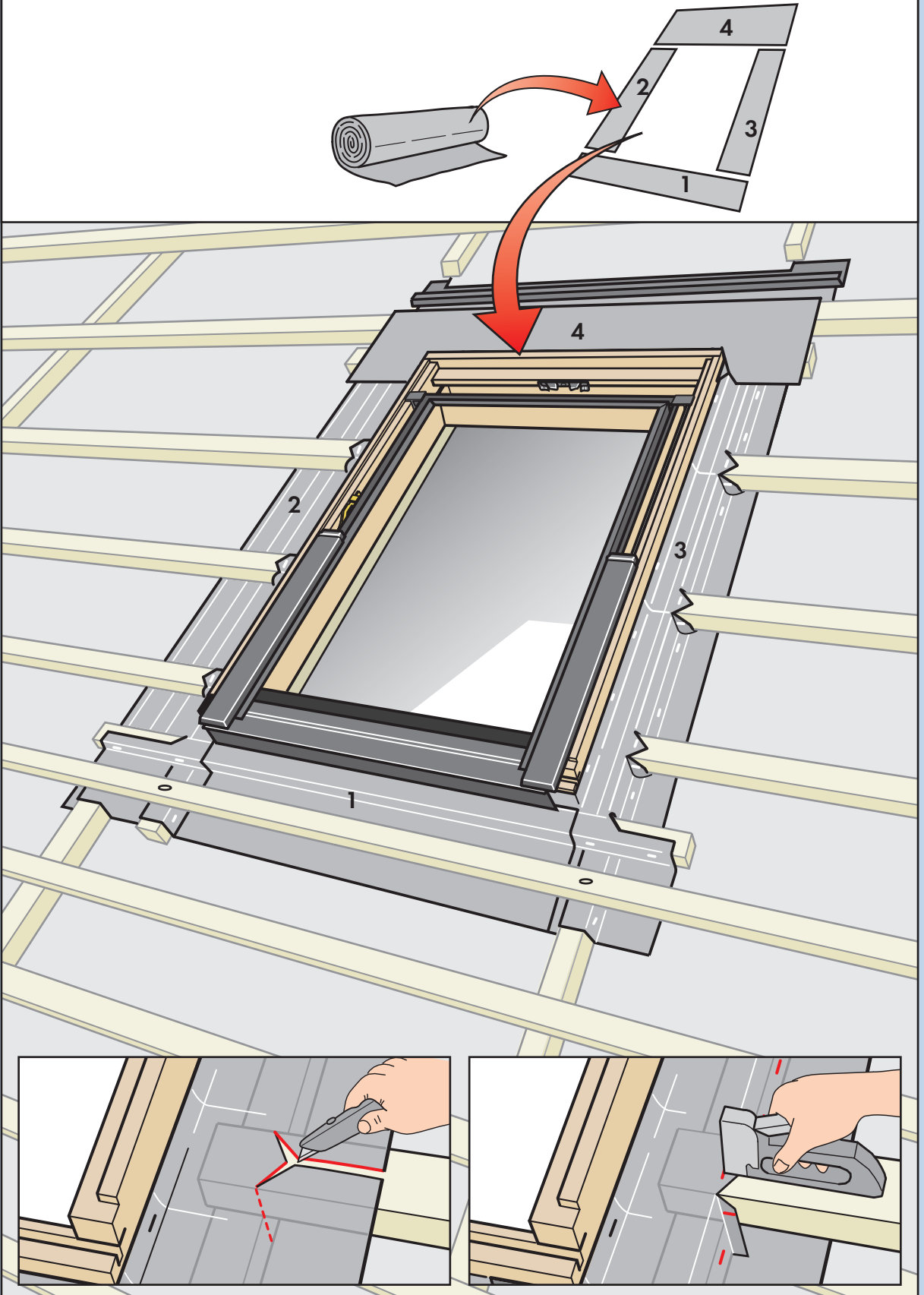


- 8** Fix top brackets in the round holes with screws (a). Long windows are supplied with extra brackets, which are fitted as shown (b).



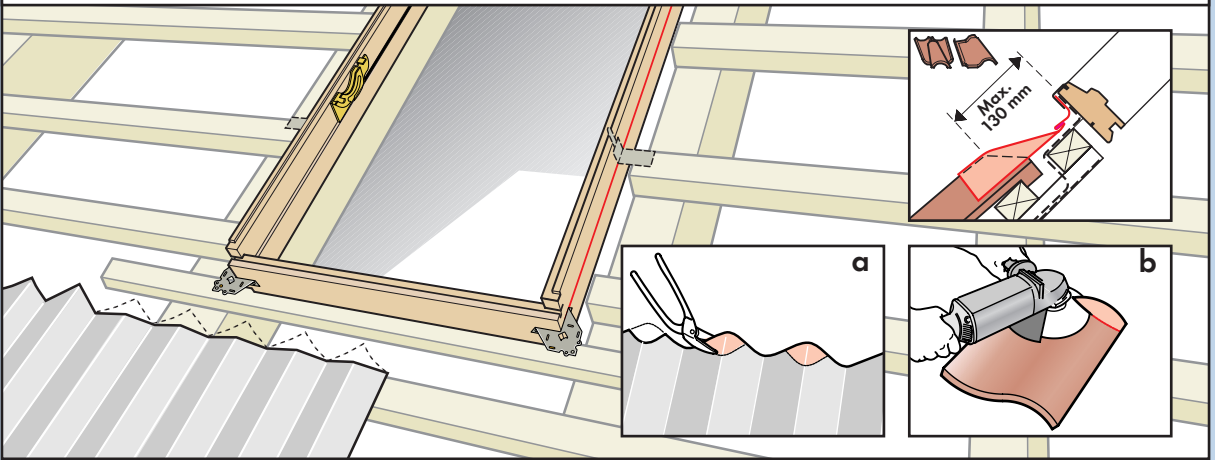
Roofing underlay

- 9** If roofing underlay is used: Dress roofing underlay up around all four sides of the frame. Roof with counter battens shown for illustration purpose.

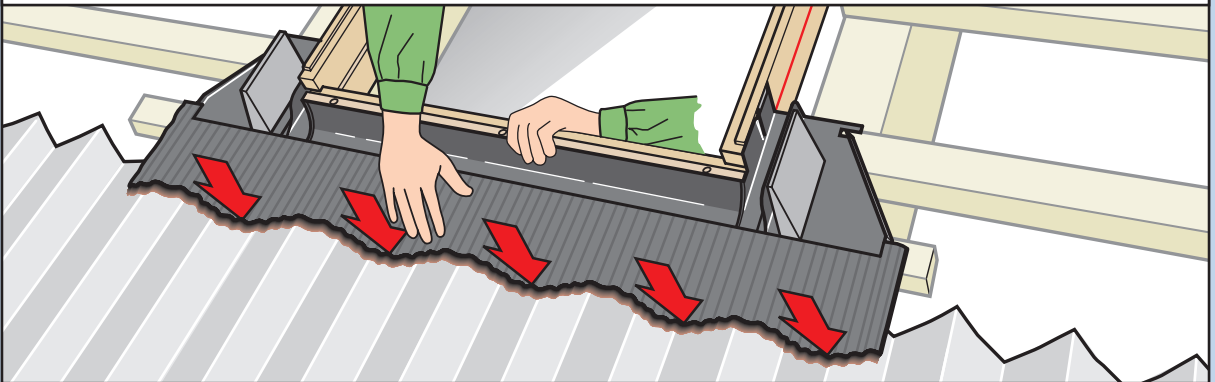


Flashing

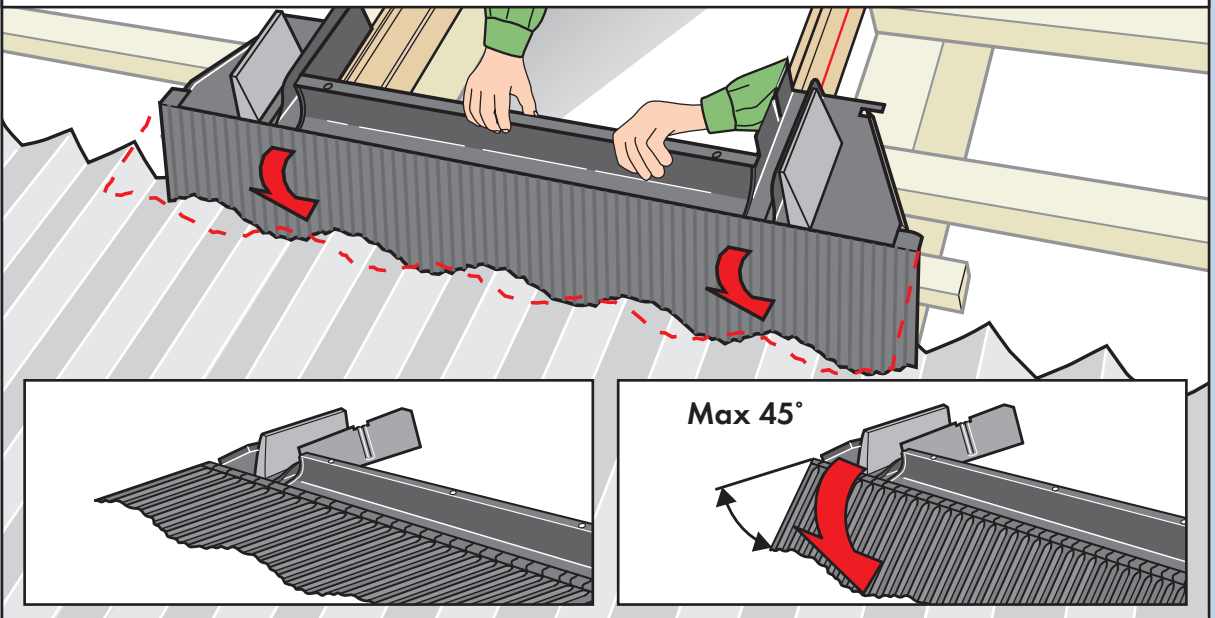
- 10** Metal roof **(a)** or tiles **(b)** should be chamfered if necessary.



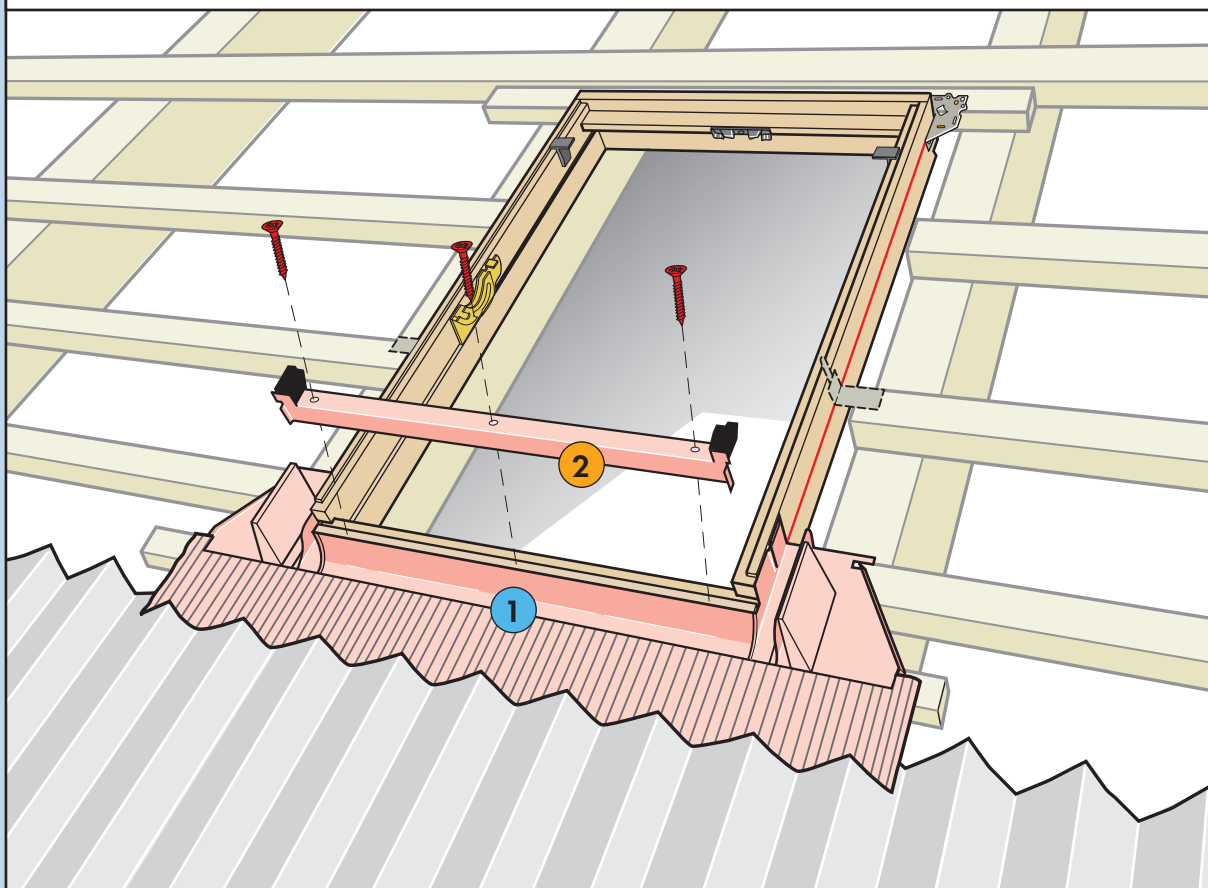
- 11** Dress apron over roofing material to ensure water run down onto roofing material.



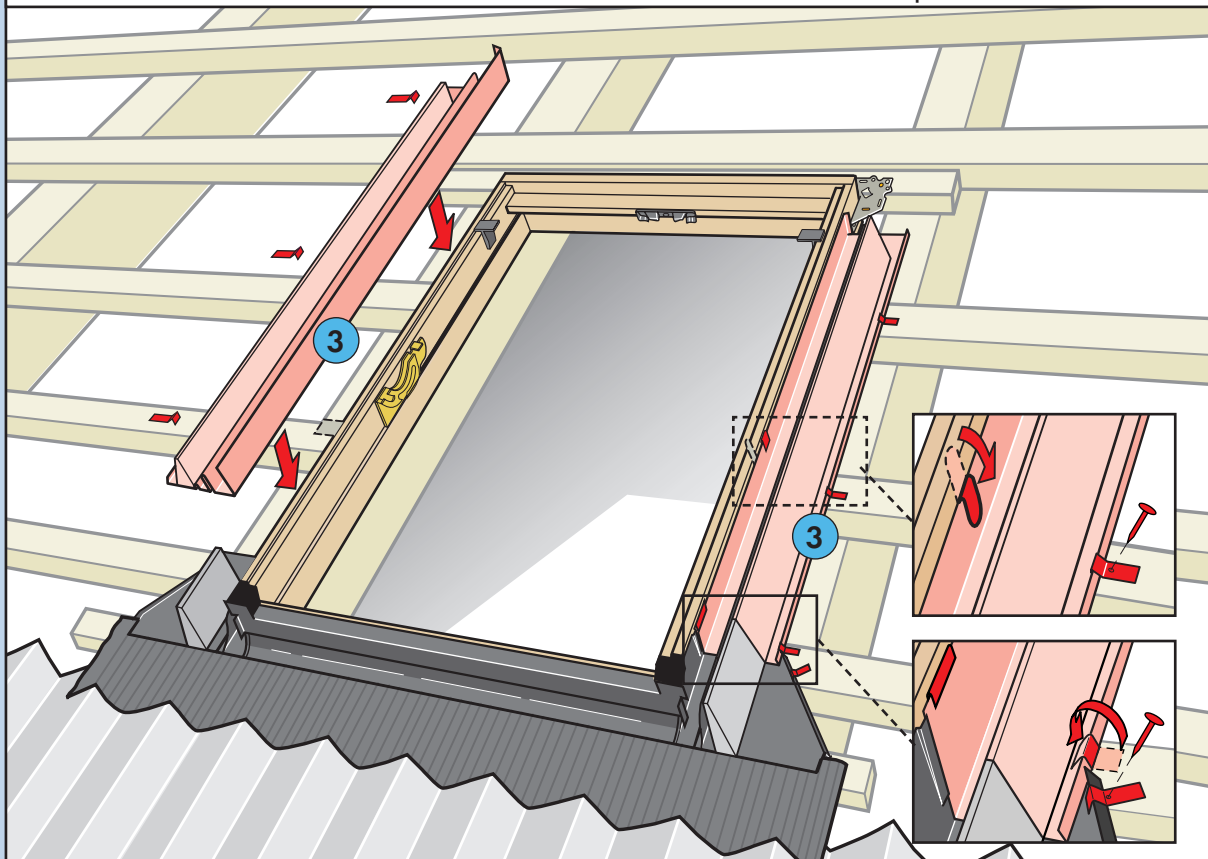
- 12** After fitting the apron to the roofing material, give the apron a "down bend" as shown - This will ensure the apron lays tight against the roofing material.



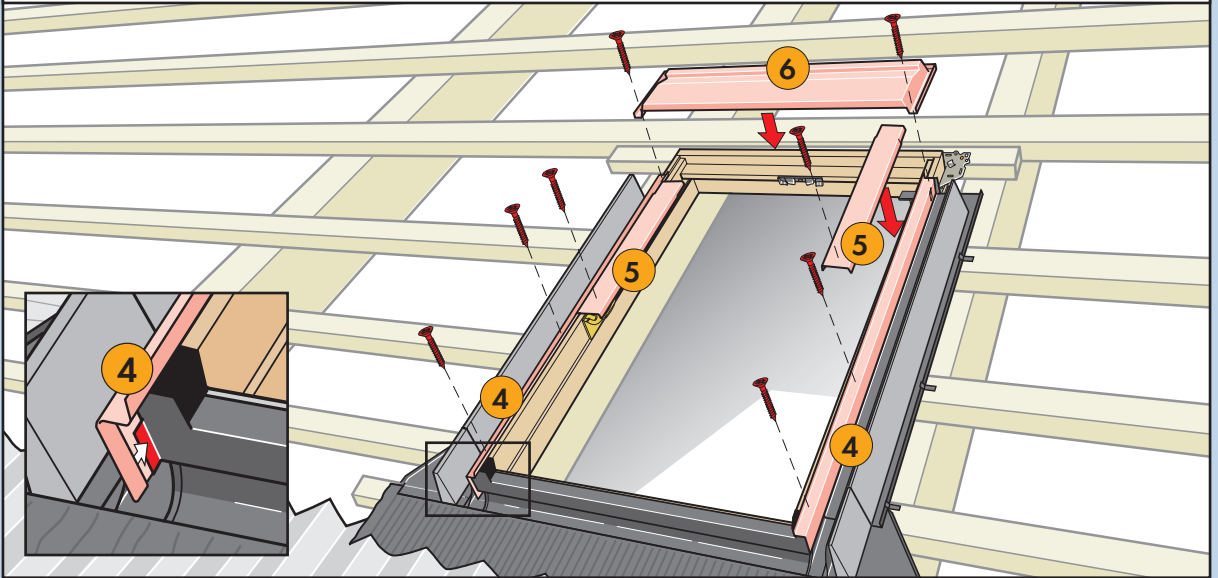
13 Position the bottom flashing section (1) and the bottom frame cover (2) and fix them by means of screws provided, through the predrilled holes.



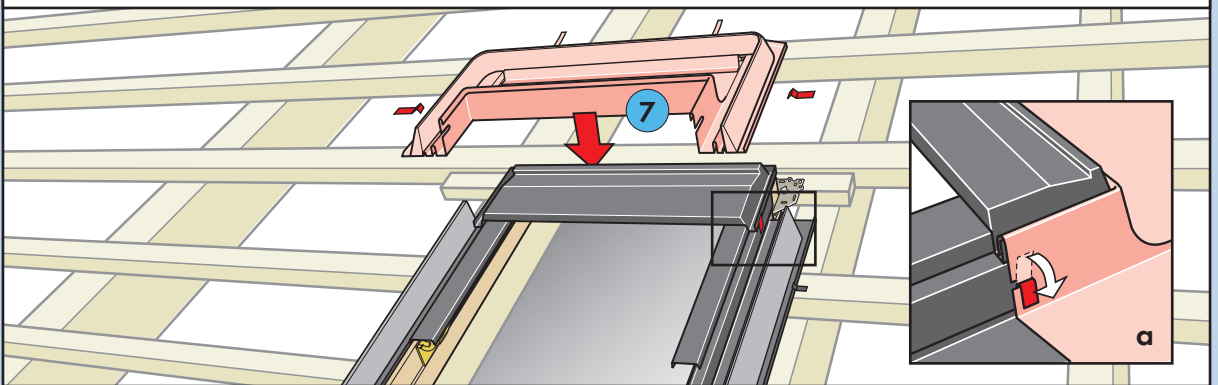
14 Slide side sections (3) under retaining channel on bottom section, then bend over flap. Pin side sections to tile battens with clips. If bracket has been fitted on the middle of the window, bend over flap.



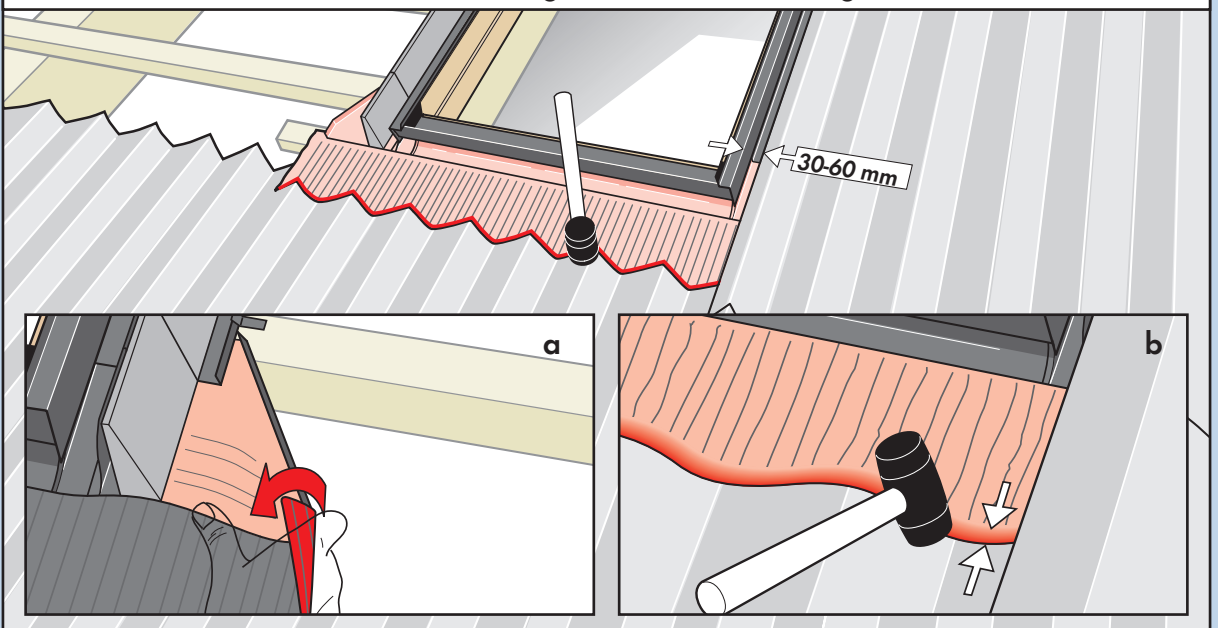
15 Fix covers (4, 5, 6).



16 Position top flashing section (7) and bend over flaps (a).



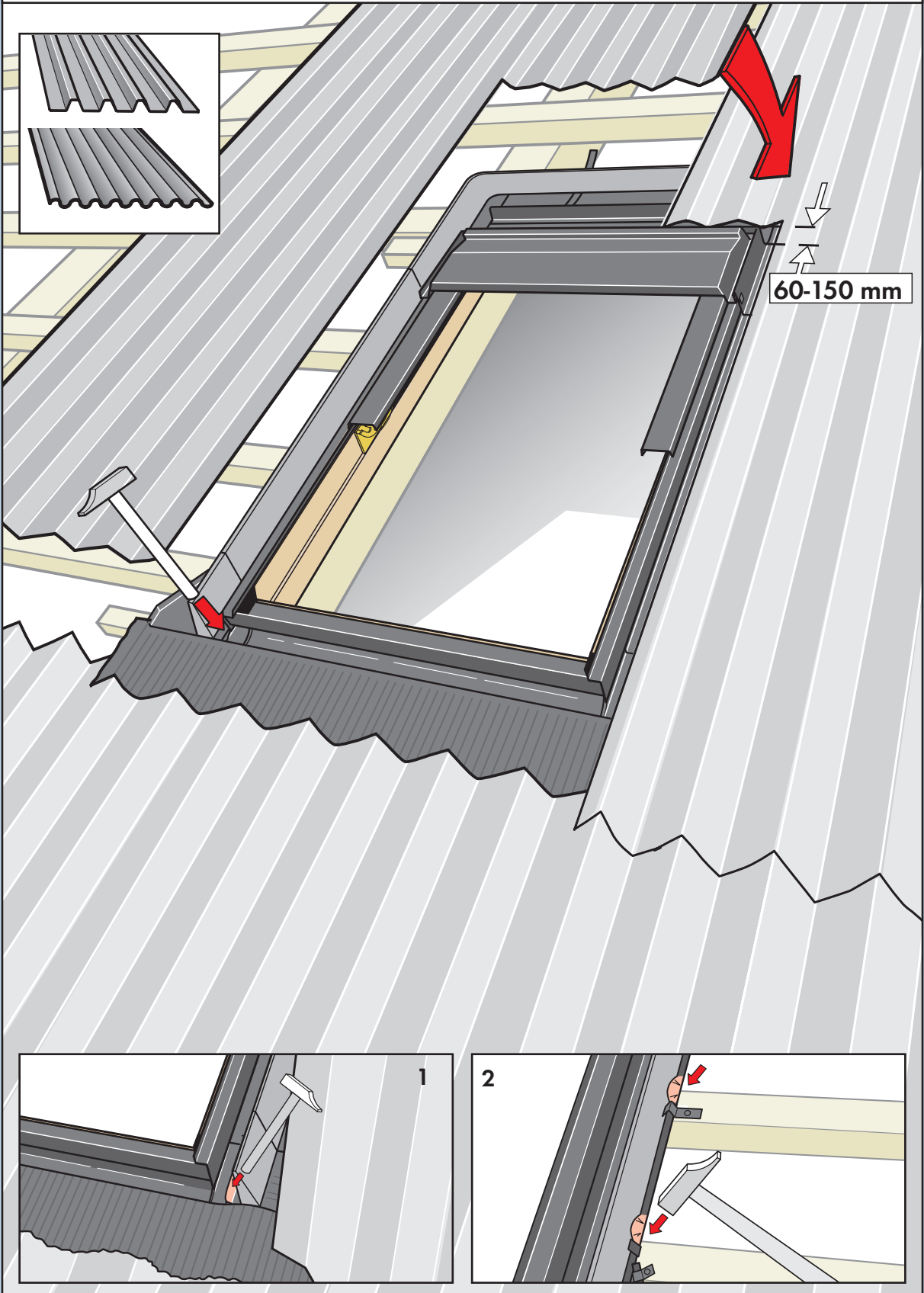
17 Fold bottom flashing section over to prevent water from penetrating at the corners (a). Position roofing material maintaining **30-60 mm** distance to window. Dress bottom flashing section over roofing material (b).



18a

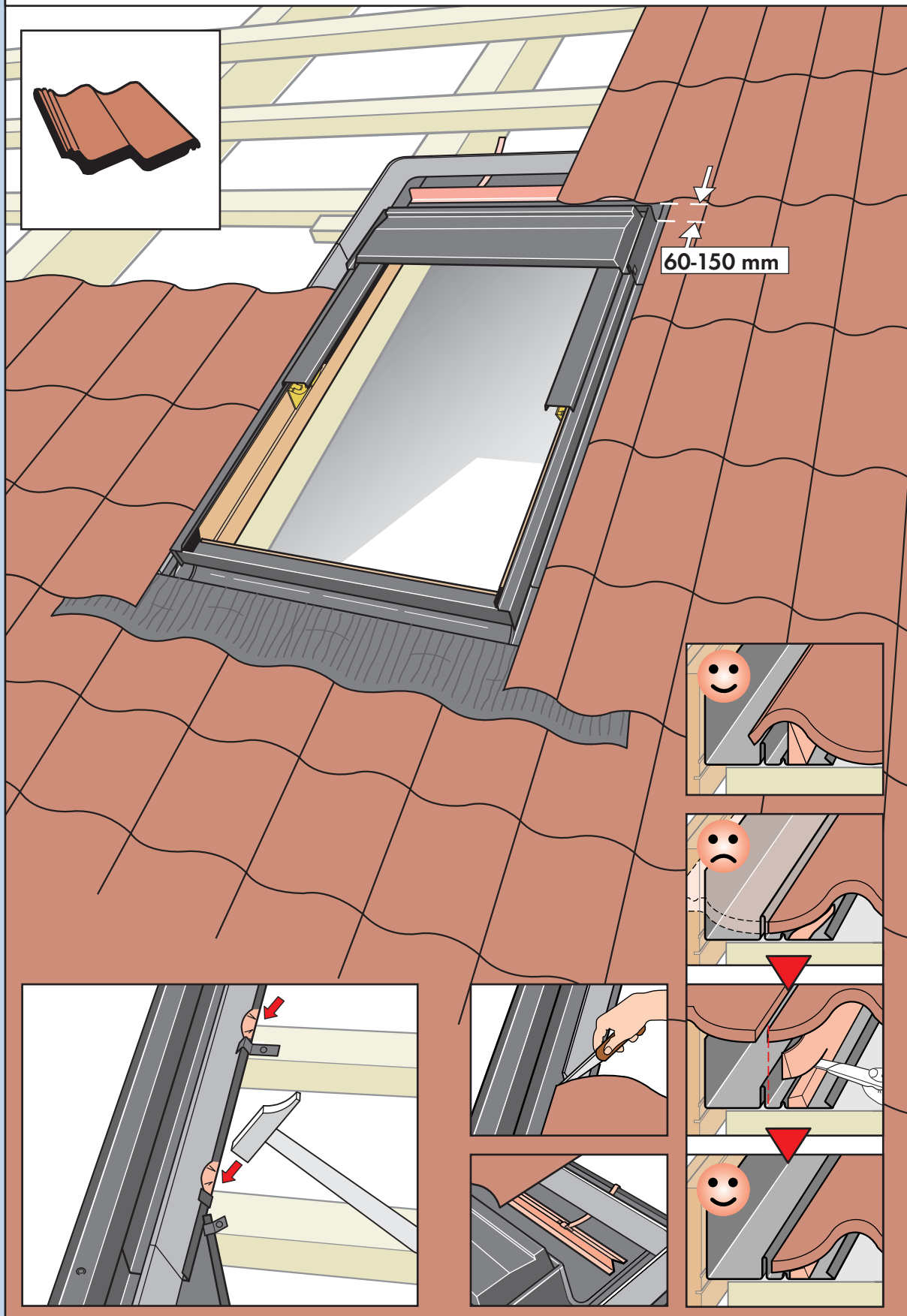
Fit remaining metal sheet maintaining **60-150 mm** distance at top. To allow the metal sheets to lie correctly, it may be necessary to flatten down the bottom corner piece of the bottom flashing section, from the side frame to the seam, to be level with the top of the battens (1), to bend down the upstand on the flashing edge at each batten and to trim the foam gasket (2).

No nails or screws should penetrate in the area of the flashing.



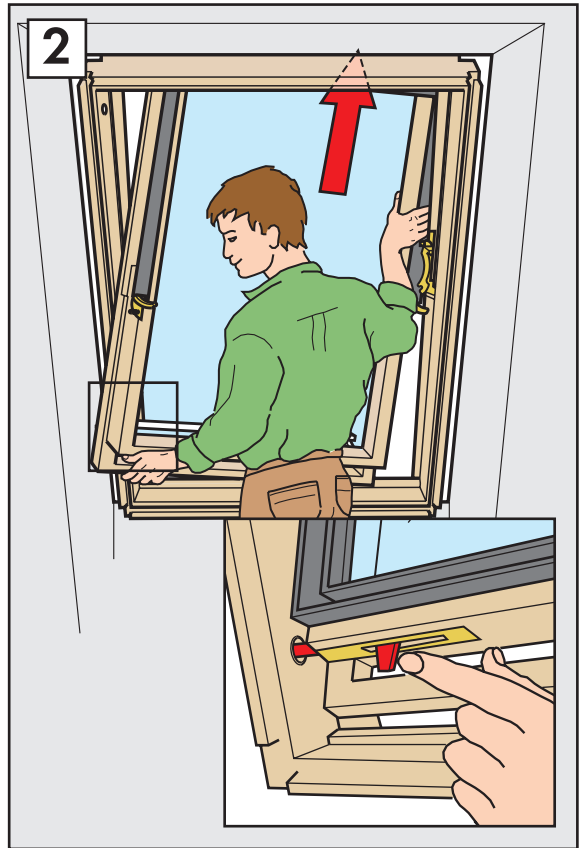
18b

Position roofing material maintaining **60-150 mm** distance at top frame. Adjust the optional tile support, so it supports the roofing material. To allow the tiles to lie correctly, it may be necessary to remove a nib, to trim the foam gasket and to flatten down the upstand on the edge of the flashing at each batten. Slit foam gasket just above each tile to allow gasket to seal against underside of tiles.



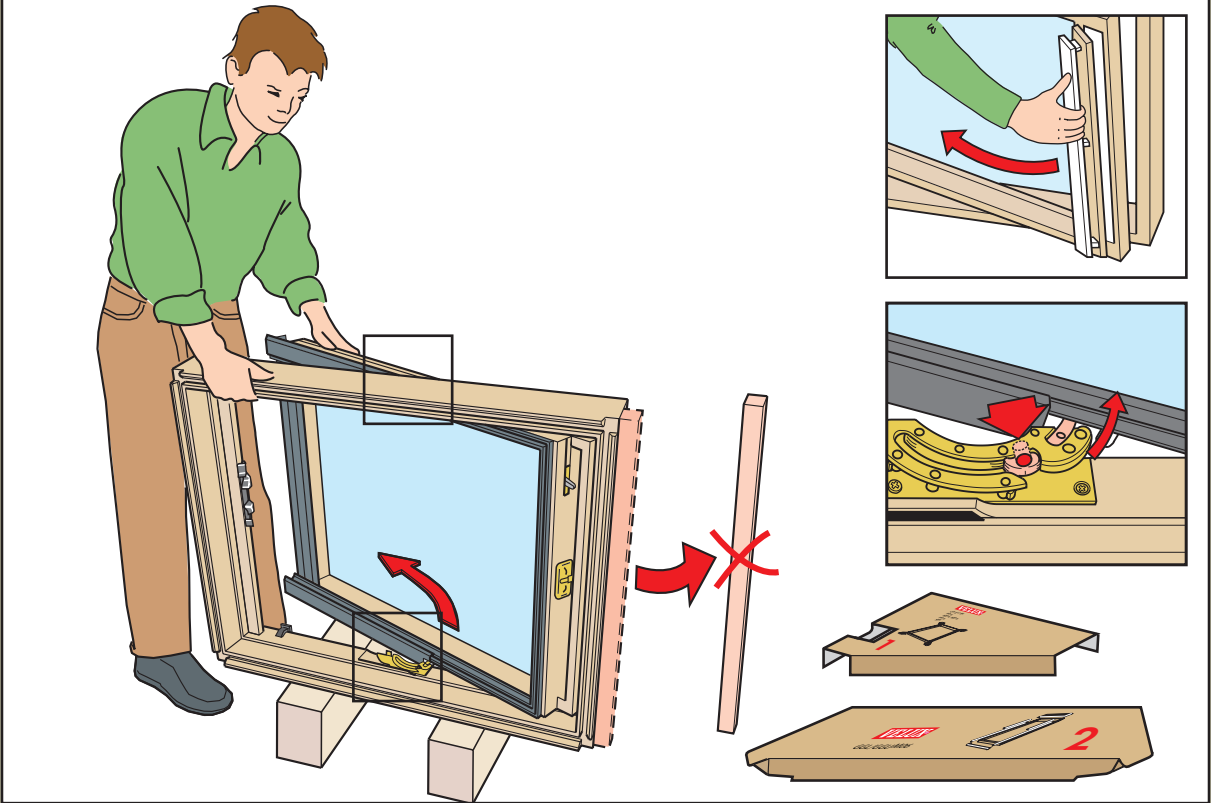
Replace sash

- 19** Replace sash, if removed earlier.
The push button is automatically released, when the window is closed.

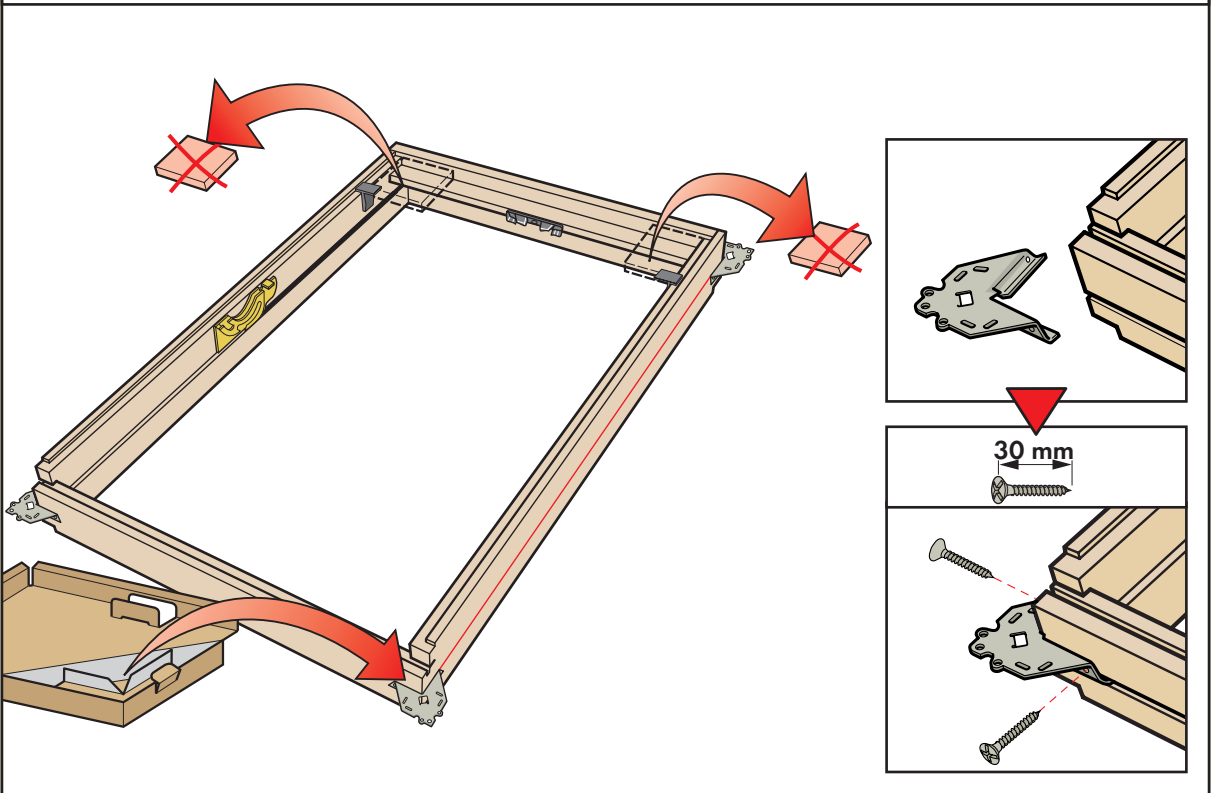


DECRA, HARVEY or CORONA pressed metal roofing + EDW Flashing

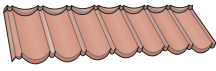
- 1** The sash may be removed to simplify installation. Press in push button, eg with a screwdriver. Remove transportation batten.



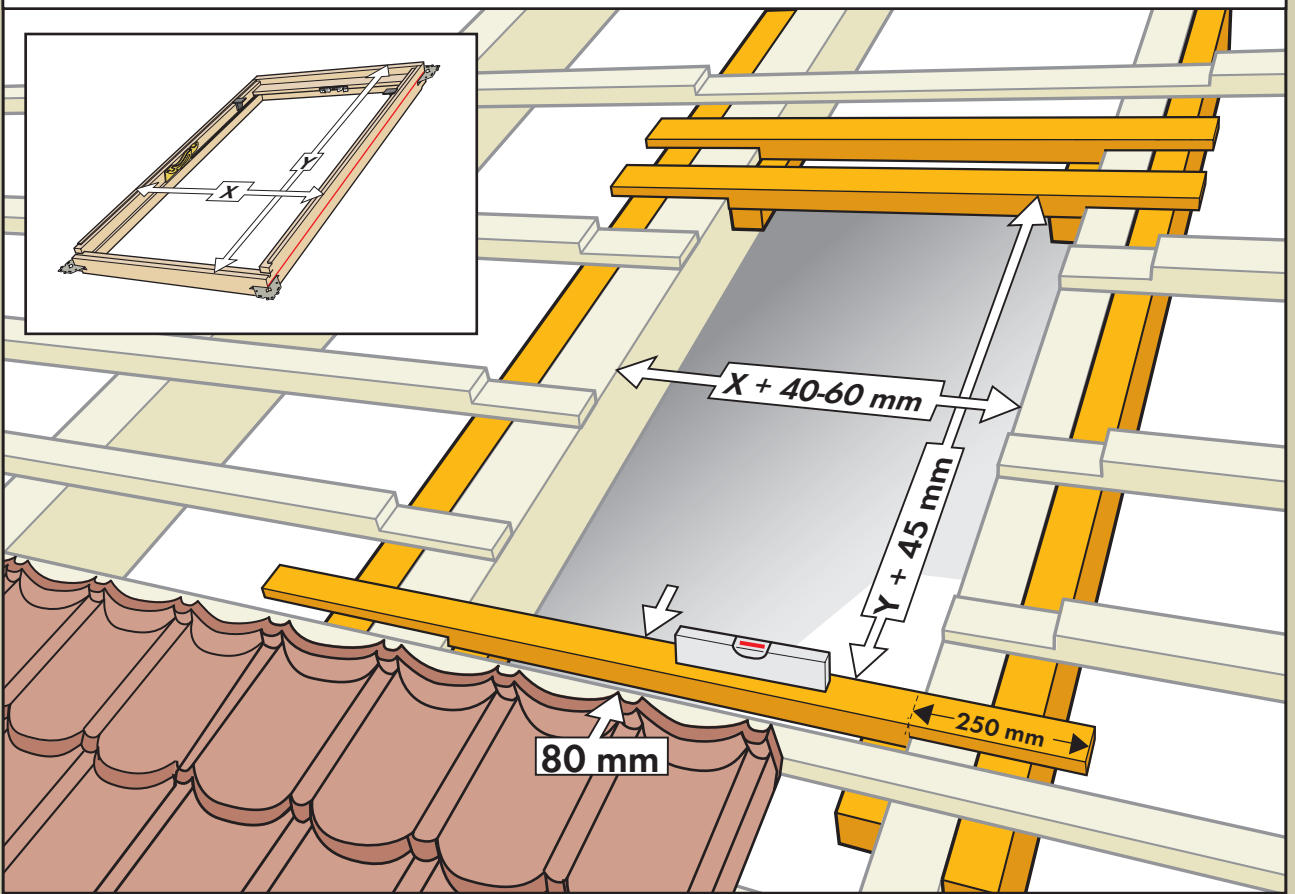
- 2** Fix brackets into the groove on the frame corners with two screws. Remove transportation blocks.



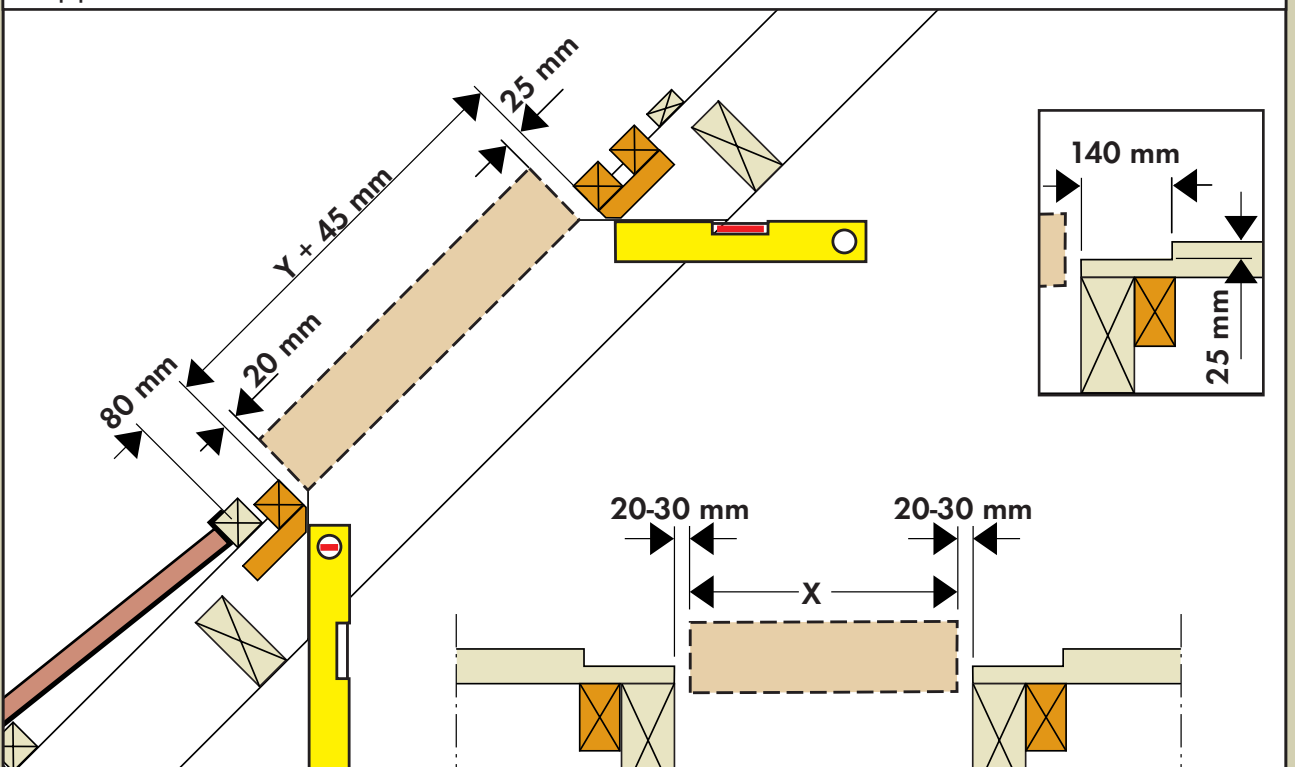
3



DECRA, HARVEY or CORONA pressed metal roofing on batten construction:
Position window in roof as detailed below.



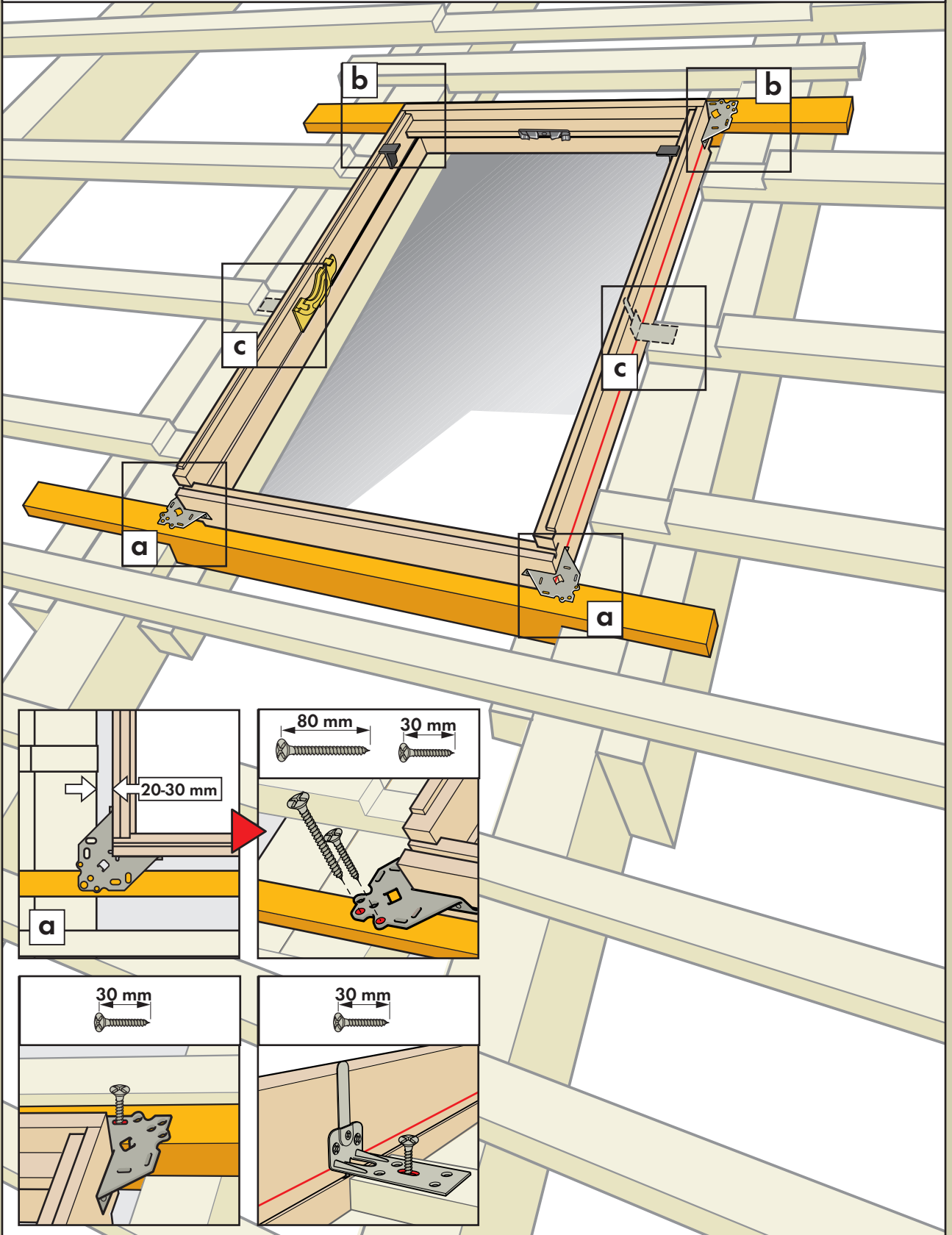
Cut a groove (25 mm deep and 140 mm wide) in the battens at both sides and above the frame. Groove is required to ensure that flashing does not cause roofing material to lift where it overlaps the flashing. Extra trimmers may be necessary to support the weakened battens.



Attachment of roof window

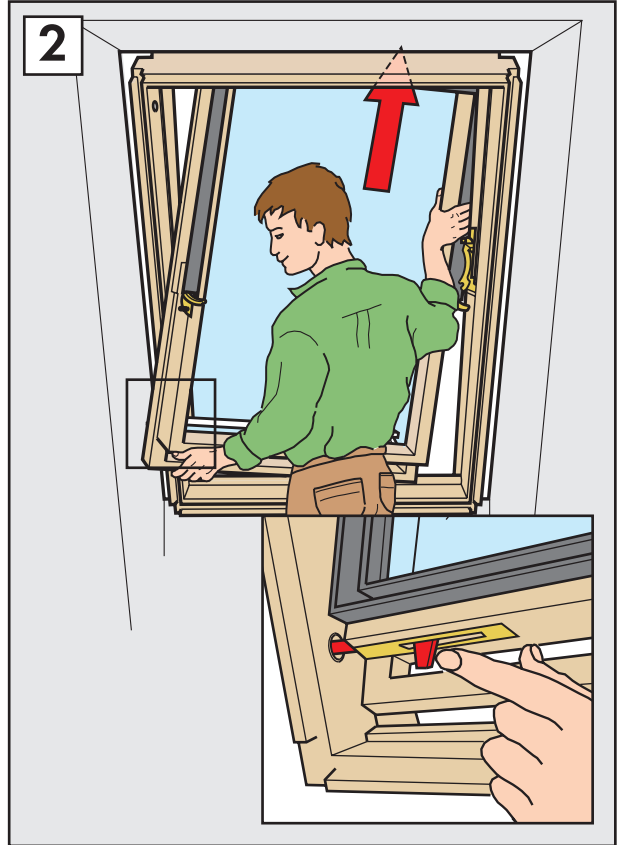
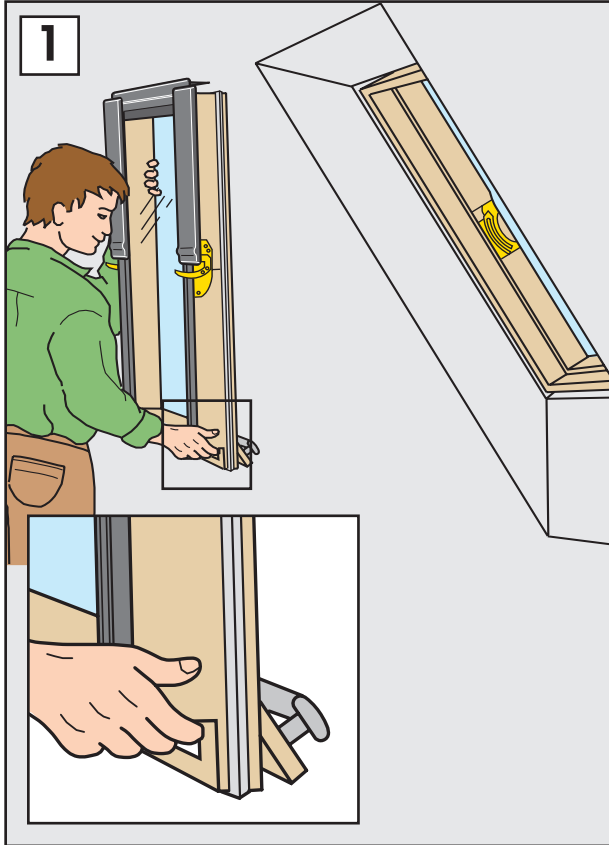
4

Fix lower brackets to rafter with two screws in the round holes (a), and top brackets with one screw, loosely in slot to allow for adjustment (b). Long windows are supplied with extra brackets, which should be fitted as shown (c).



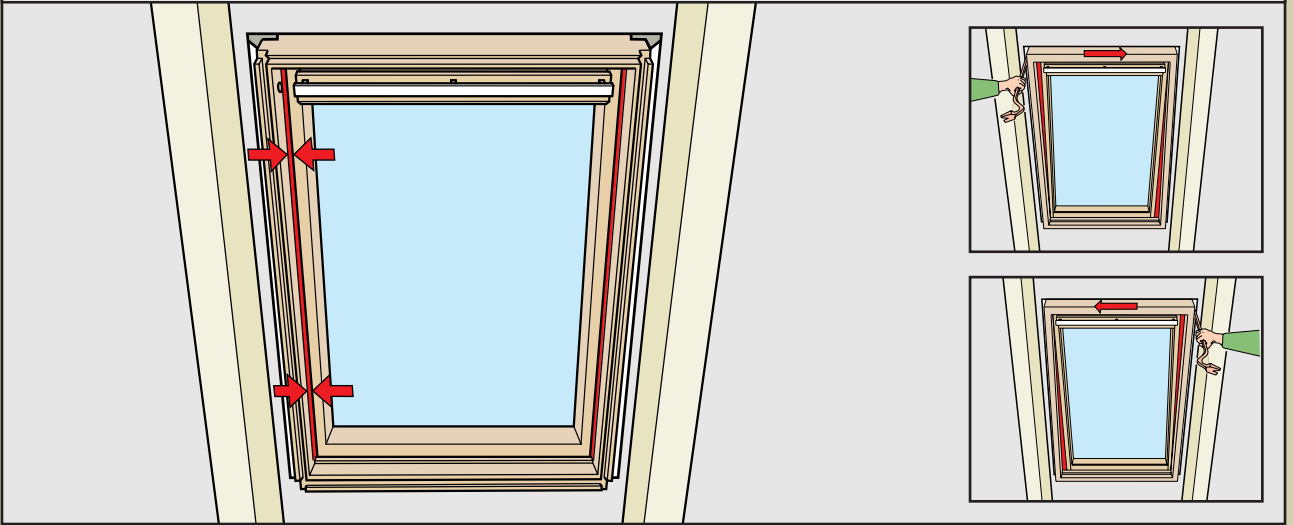
Replace sash

- 5** Replace sash, if removed earlier.
The push button is automatically released, when the window is closed.

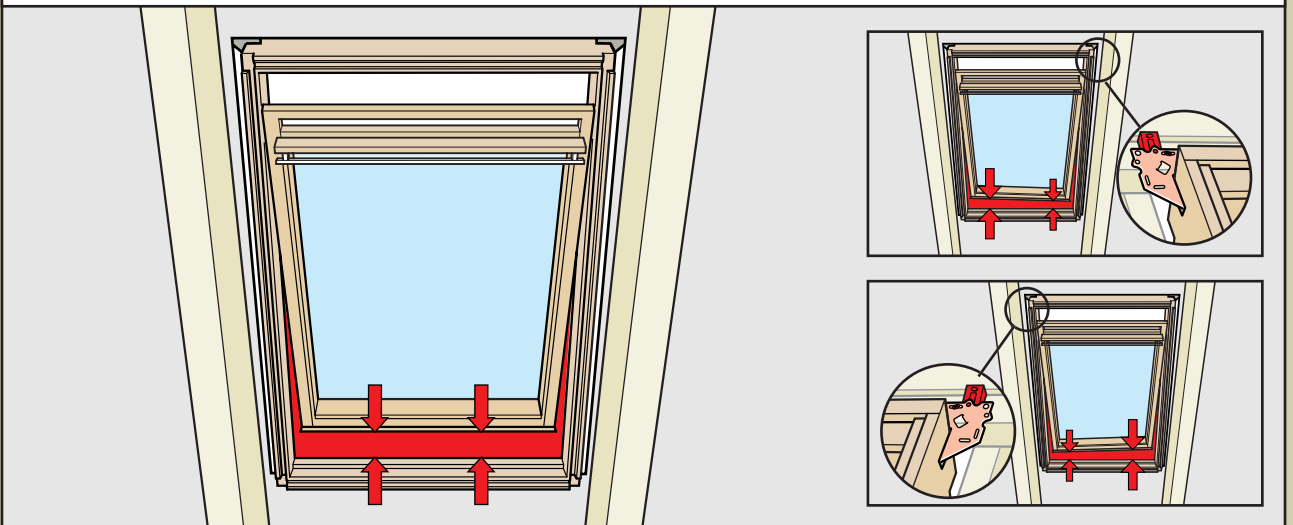


Adjustment and final attachment of roof window

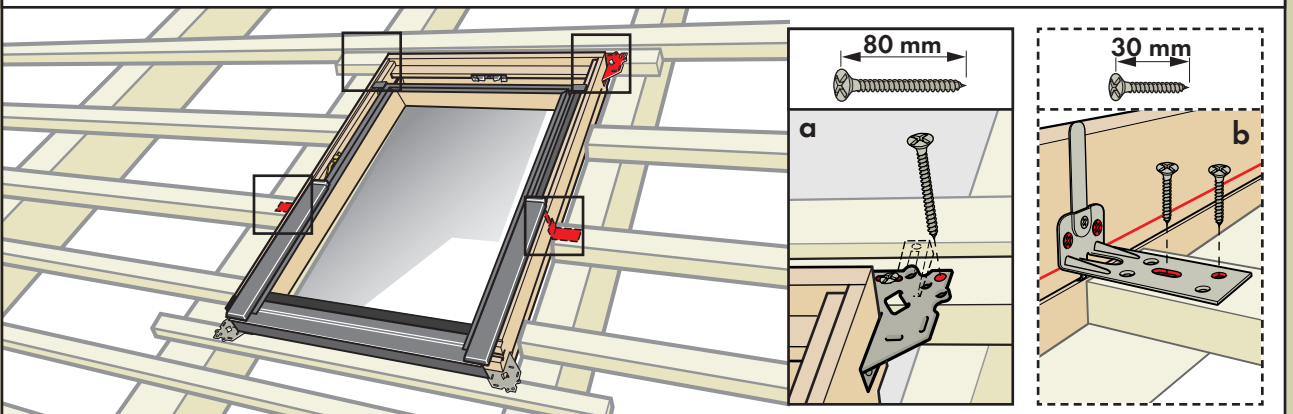
6 Adjust distance between frame and sash to ensure an even gap at each side.



7 If uneven rafters cause the frame to twist, adjust using the wedge supplied to ensure an even gap between bottom frame and bottom sash.



8 Fix top brackets in the round holes with screws (a). Long windows are supplied with extra brackets, which are fitted as shown (b).

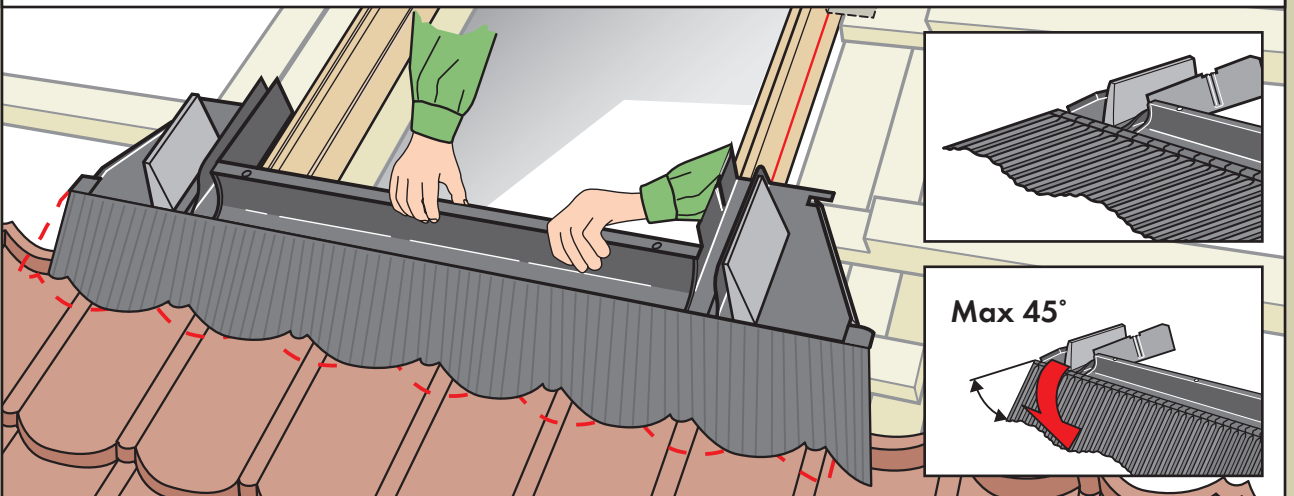


Flashing

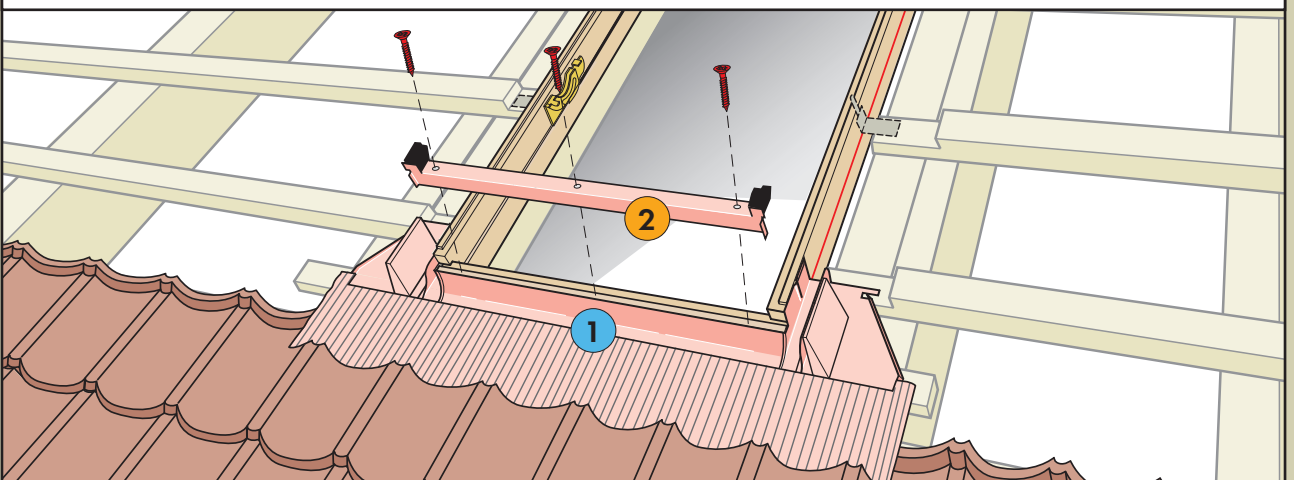
- 9** Dress apron over roofing material to ensure water runs down onto roofing material.



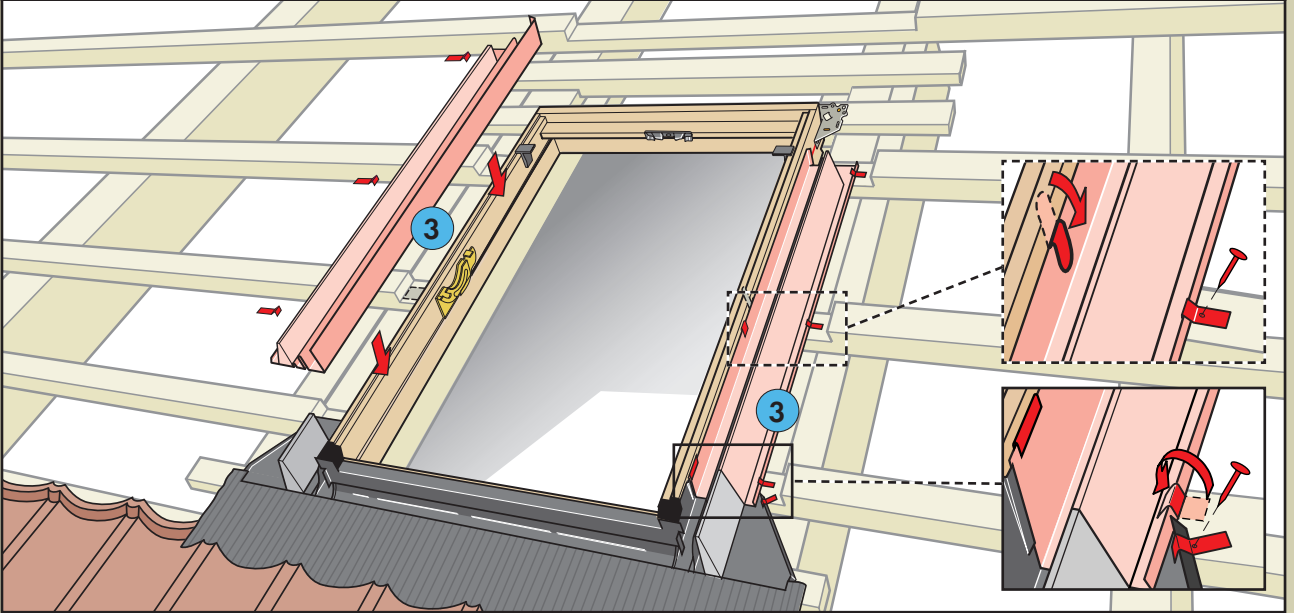
- 10** After fitting the apron to the roofing material, give the apron a "down bend" as shown - This will ensure the apron lays tight against the roofing material.



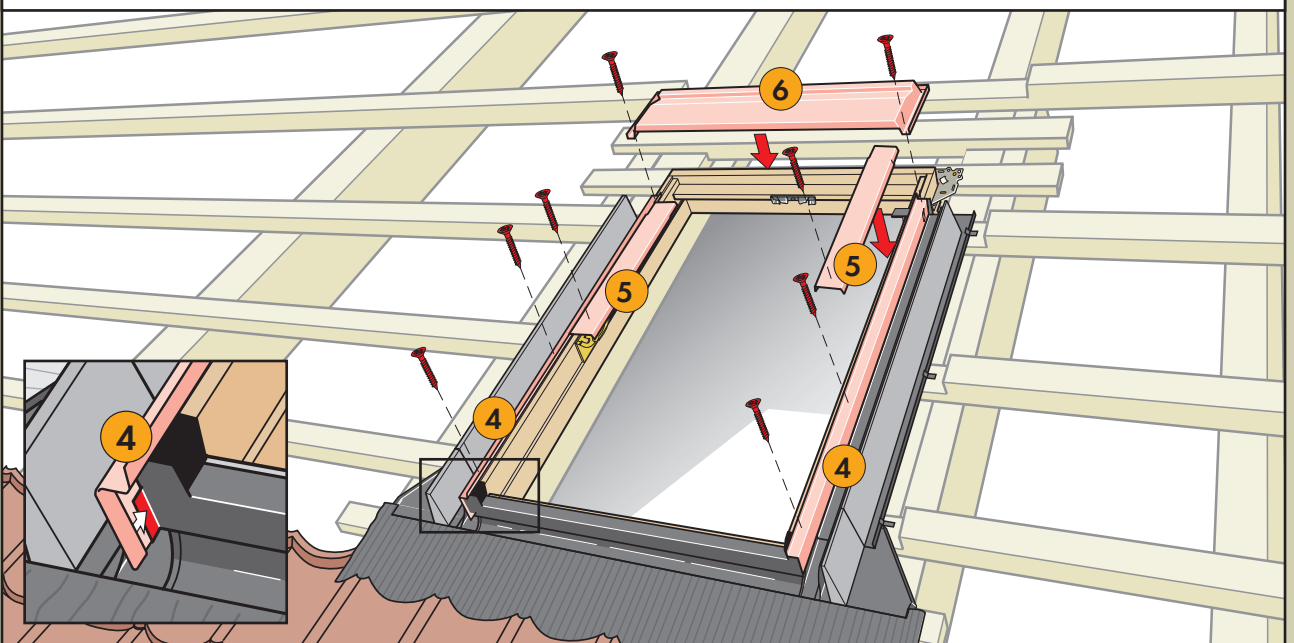
- 11** Position the bottom flashing section (1) and the bottom frame cover (2) and fix them by means of screws provided, through the predrilled holes.



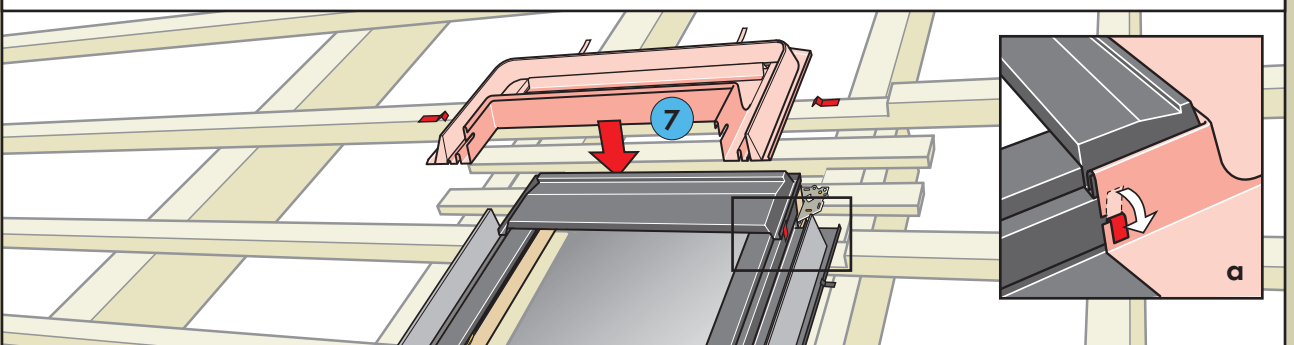
12 Slide side sections (3) under retaining channel on bottom section, then bend over flap. Pin side sections to tile battens with clips. If bracket has been fitted on the middle of the window, bend over flap.



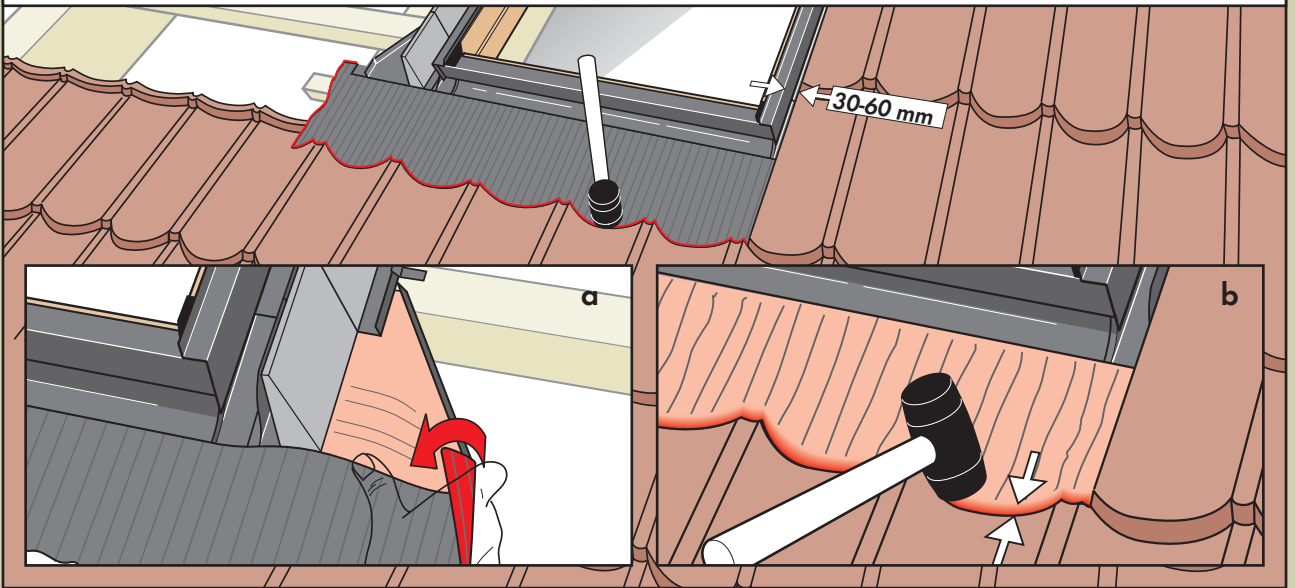
13 Fix covers (4, 5, 6).



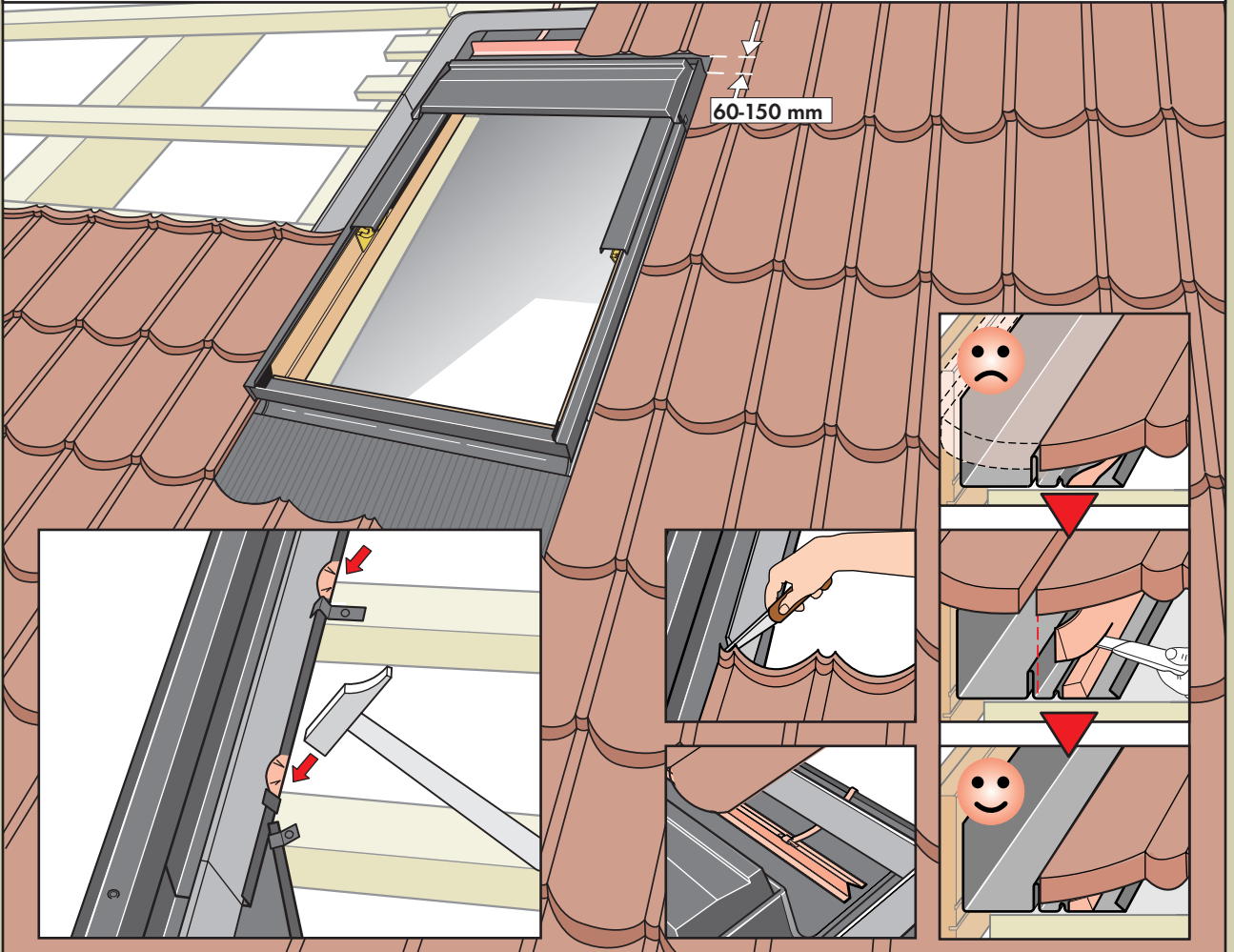
14 Position top flashing section (7) and bend over flaps (a).



15 Fold bottom flashing section over to prevent water from penetrating at the corners (a). Position roofing material maintaining **30-60 mm** distance to window. Dress bottom flashing section over roofing material (b).

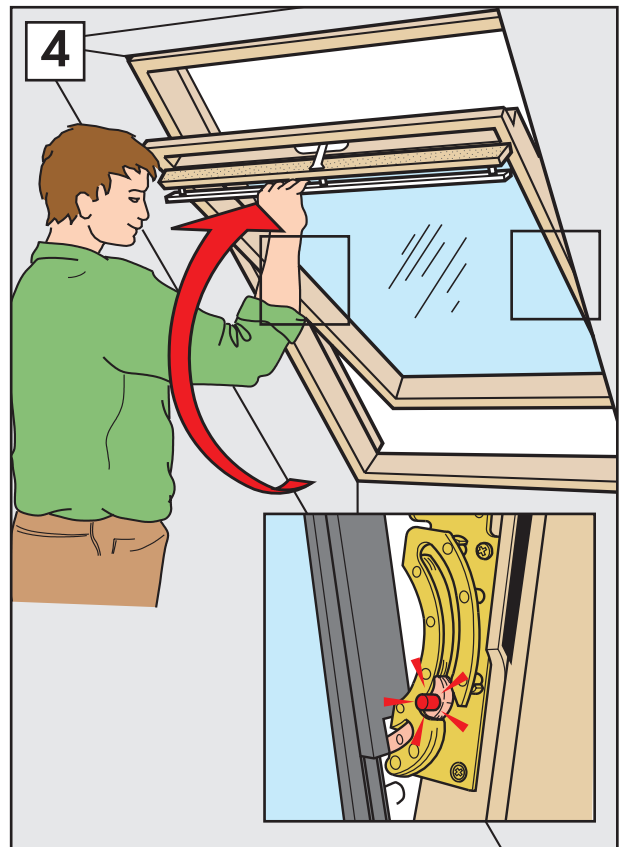
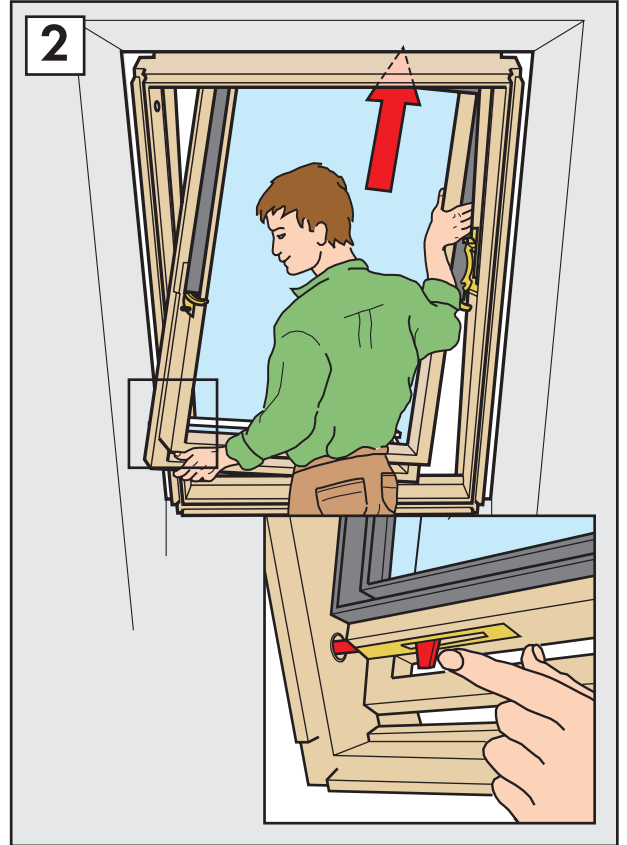


16 Position roofing material maintaining **60-150 mm** distance at top frame. Adjust the optional tile support, so it supports the roofing material. To allow the tiles to lie correctly, it may be necessary to remove a nib, to trim the foam gasket and to flatten down the upstand on the edge of the flashing at each batten. Slit foam gasket just above each tile to allow gasket to seal against underside of tiles.



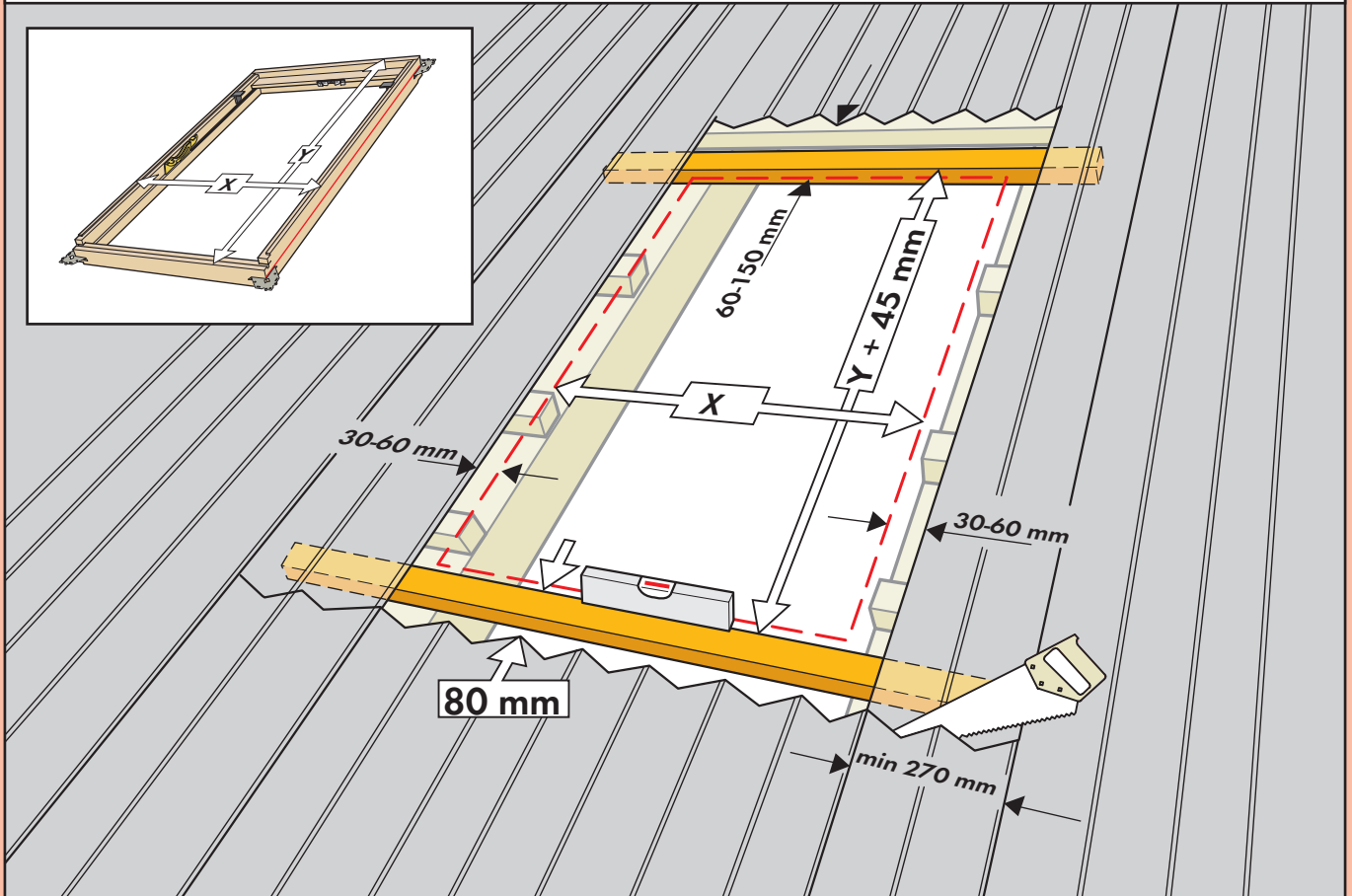
Replace sash

- 17** Replace sash, if removed earlier.
The push button is automatically released, when the window is closed.

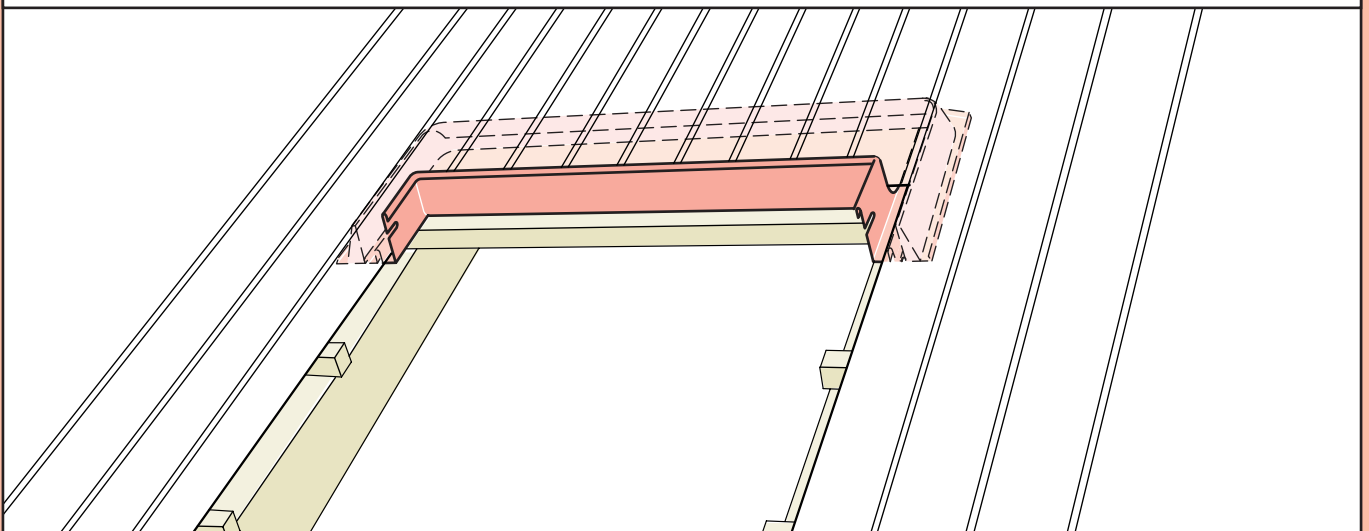


GGL + EDW in metal roof, existing construction

- 1 Cut the metal sheets taking care to maintain the correct distance from the course of metal sheets to window frame. Overcut at both sides below roof window to allow for full width of apron to come through metal sheet. Take care to maintain **30-60 mm** distance from sides of frame to metal roof and **60-150 mm** above roof window. Note that the cut must end on top of the highest point of the profile.

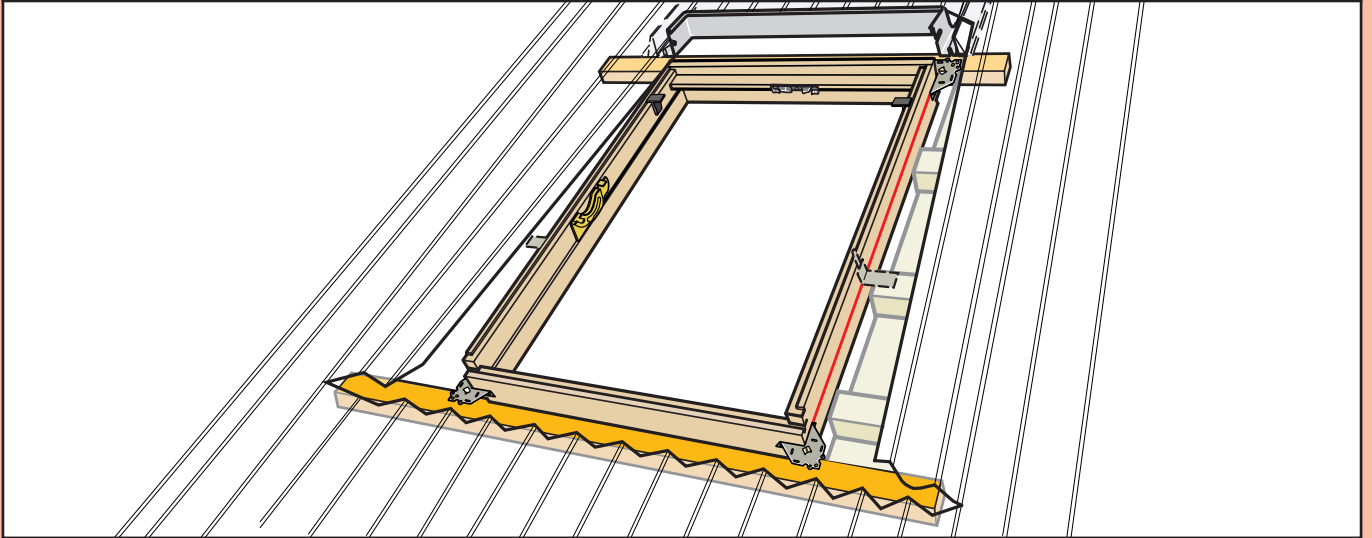


- 2 Fit top flashing section under the existing metal roof before laying the frame in position.



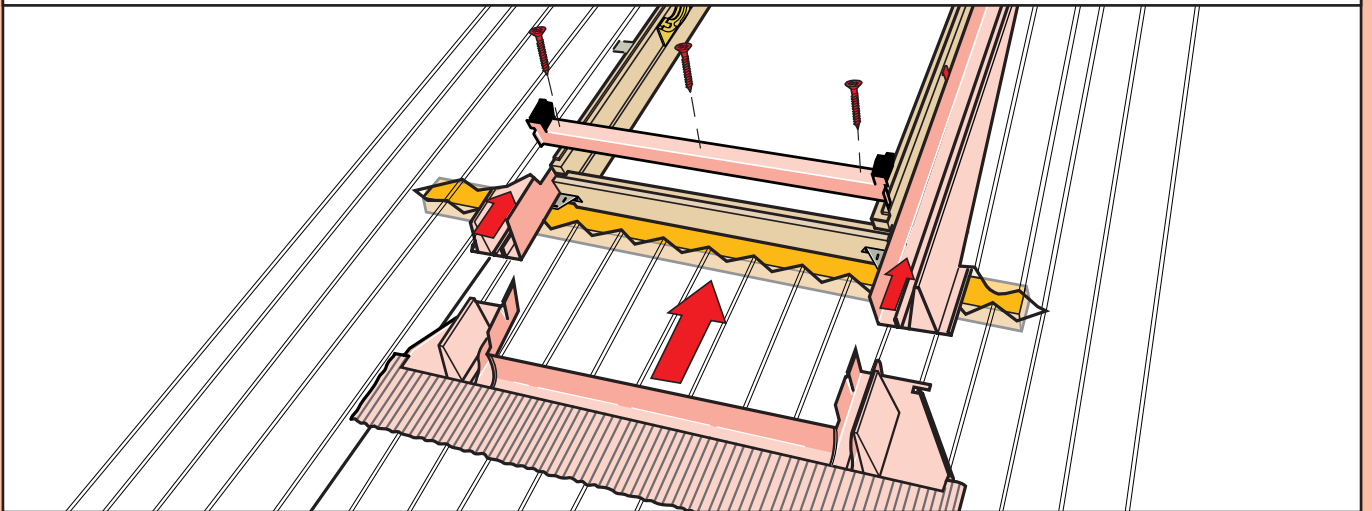
3

For window installation please look at page 6 step 4 to page 9 step 9.



4

Fit the side flashing sections under the existing metal roof and under the top flashing section. Fit the sides of the bottom flashing section under the existing metal roof and under the side flashing sections. See also page 10, 11 step 10 – 14.

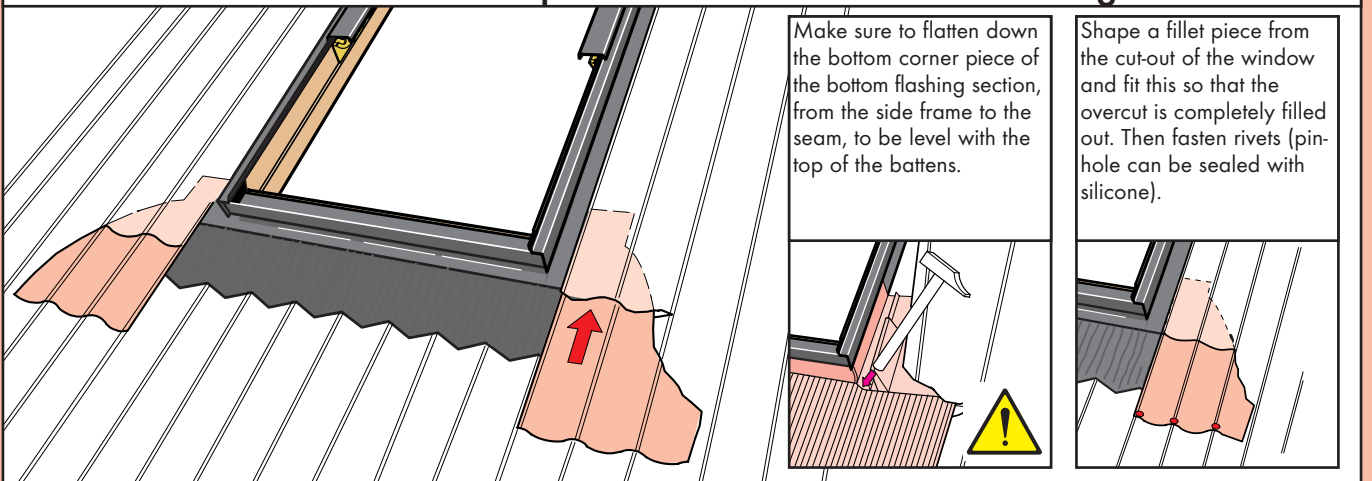


5

Replace aluminium coverings. Place the top flashing section. Make sure that the metal sheets and flashing will be supported by battens/purlins.

See also page 12 step 15 – 17.

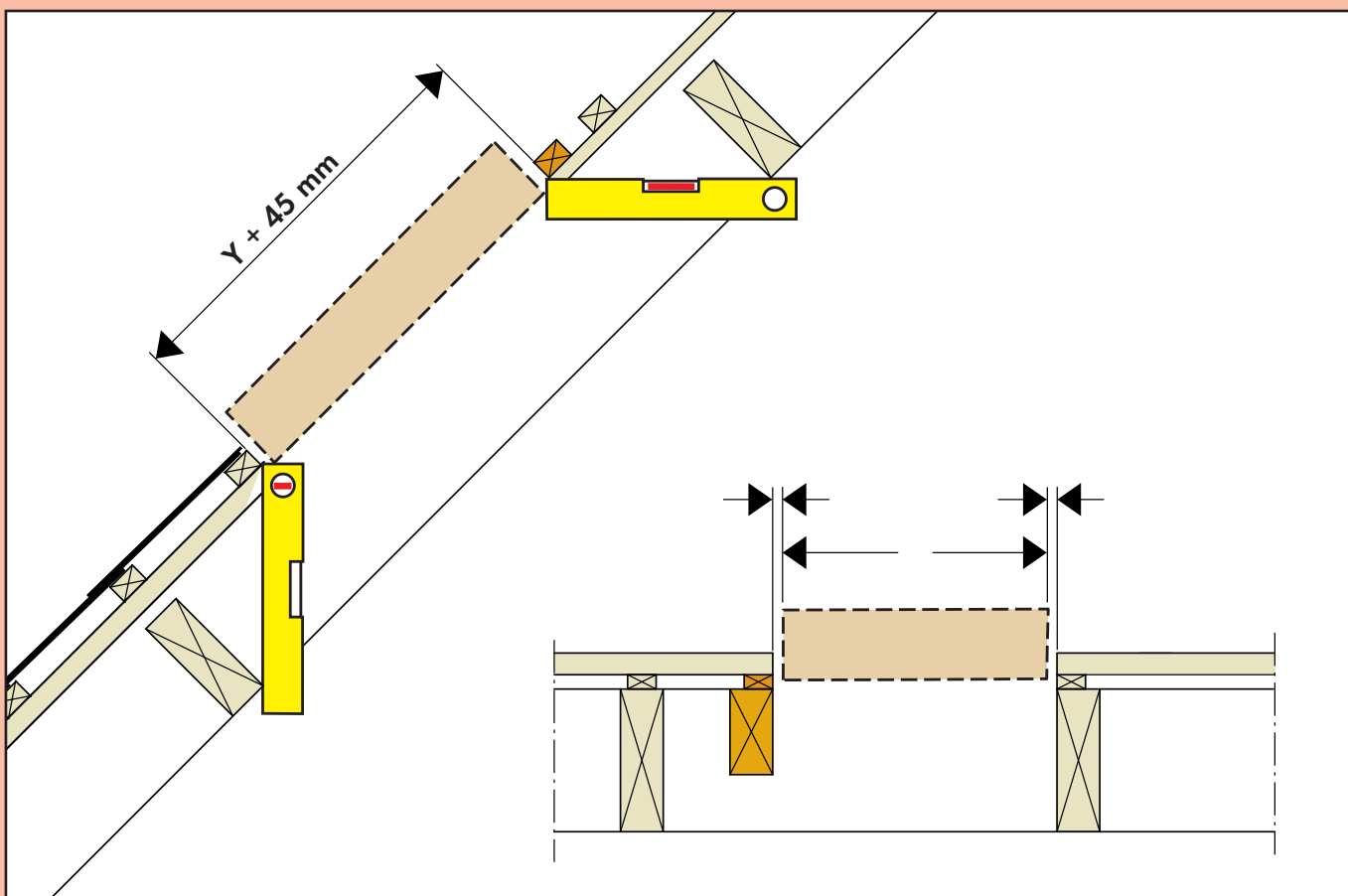
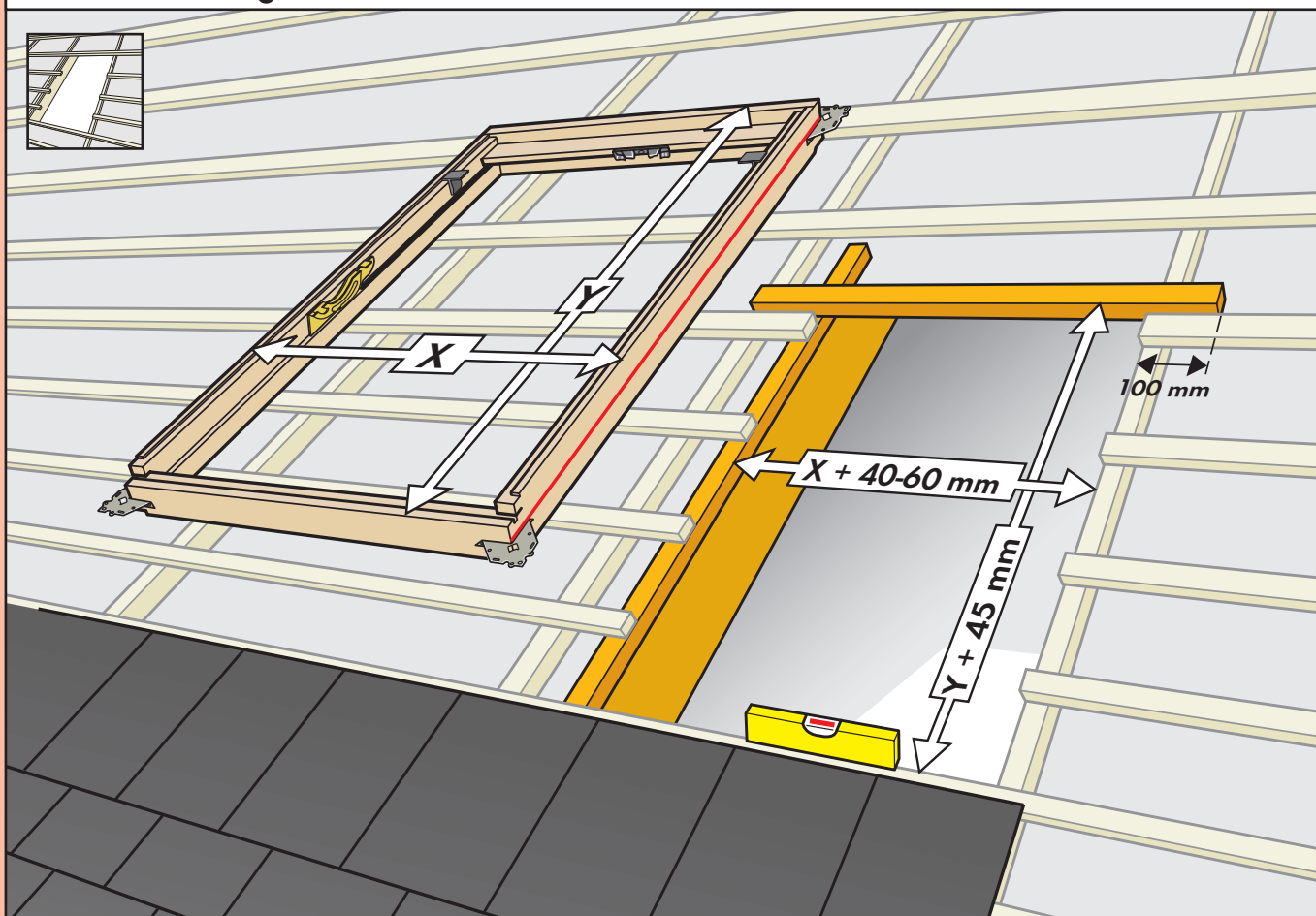
No nails or screws should penetrate in the area of the flashing.



Make sure to flatten down the bottom corner piece of the bottom flashing section, from the side frame to the seam, to be level with the top of the battens.

Shape a fillet piece from the cut-out of the window and fit this so that the overcut is completely filled out. Then fasten rivets (pin-hole can be sealed with silicone).

GGL + EDL For installation of the VELUX Roof Window type GGL follow the instructions from page 3 step ① to page 9 step ⑨. For flashing see instructions in the EDL flashing carton.



Directions for use (For the homeowner)

1 Ventilation position

The built-in barrel bolt allows you to fix the window in open position. The barrel bolt is placed in the top left part of the window, and slides into the bushing at the top of side frame.

2 Cleaning the roof window

Wipe varnished surface either with a dry cloth or with lukewarm soap and water. The cleaner and drier the timber is kept, the longer its good looks will be maintained.

3 Cleaning the pane

To clean the outside glass, rotate the sash a full 180 degrees. Clean the pane with a soft, clean, lint-free cloth/chamois leather/non-abrasive sponge or a clean, non-metal window squeegee.

Clean water will normally be sufficient for cleaning the pane. Ordinary, non-abrasive household cleaners can also be used.

"Soft" water is best for cleaning panes. In hard-water areas, a small amount of detergent can be used to soften the water.

Warning

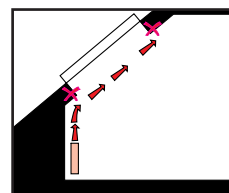
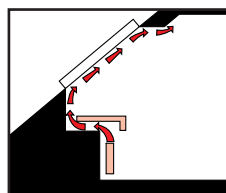
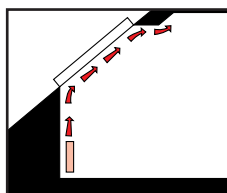
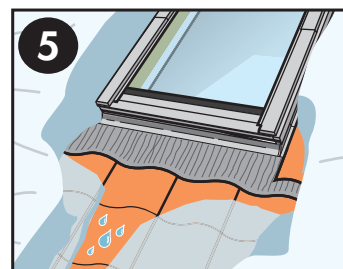
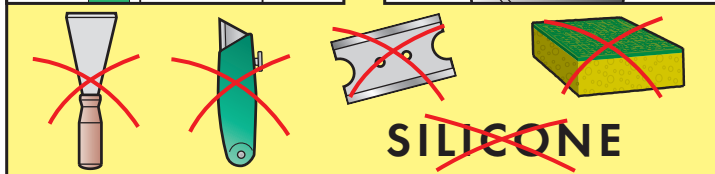
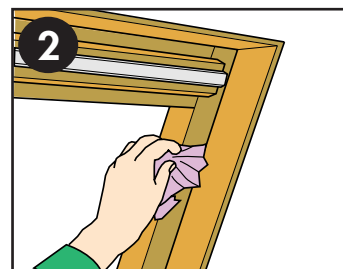
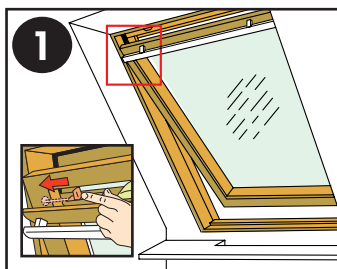
- Avoid contact from silicone with the pane.
- Do not use any cleaning products containing abrasive particles.
- Do not use chemical products for cleaning the pane.
- Avoid contact with the pane from all sharp or abrasive objects including jewellery.
- Never attempt to clean off dirt on the pane without first applying water.
- If any works are taking place in the vicinity of the pane, protect the pane with a clean plastic sheet to prevent any splashes or staining from aggressive compounds.

4 Cleaning the flashing

Leaves and other debris should be removed from the flashing around the window once per year to allow rain water to pass freely.

5 Snow and ice

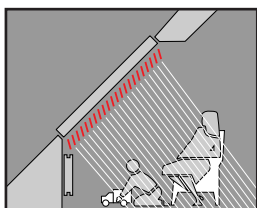
Remove snow and ice to allow melt water to drain off from and around the window.



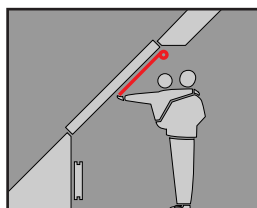
The lining should allow for a good air flow across the pane to reduce the possibility of condensation.

VELUX ACCESSORIES

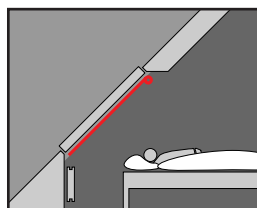
VENETIAN BLINDS



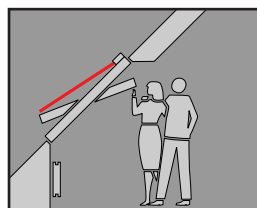
ROLLER BLINDS



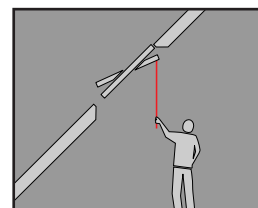
BLACK OUT BLINDS



EXTERNAL AWNINGS



OUT-OF-REACH CONTROLS



For further information on accessory please contact VELUX

If you need further information on installation of this product please contact VELUX

AUS: VELUX (AUSTRALIA) PTY LTD.
☎ (02) 9550-3288
☎ 1800 683 589 (Toll Free)

NZ: VELUX-NEW ZEALAND LTD.
☎ 09 634-4126
☎ (0800) 650 445 (Toll Free)