

## Sisalation® Wall Wrap MD

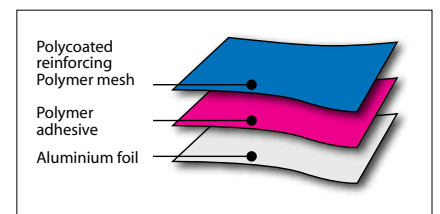
### Product description and typical applications

Sisalation® Wall Wrap MD is an economical medium duty wall wrap typically used behind brick veneer walls for domestic and commercial buildings. It may also be used behind fibre cement cladding depending on cladding manufacturer requirements. Sisalation® Wall Wrap MD is suitable for use in buildings in bushfire prone areas. It is a protective membrane that provides resistance to puncturing and tearing. It also provides an effective barrier against moisture, vapours, wind, heat and dust penetration when overlapped. Particularly when sealed with Sisalation® Vapastop® 883 self adhesive aluminium tape.

### Physical characteristics

Width	Length	Area	Weight
1350mm	60m	81m <sup>2</sup>	7.7kg
1350mm	30m	40.5m <sup>2</sup>	3.8kg

Sisalation® Wall Wrap MD has a layer of aluminium foil bonded to a tear resistant polymer based weave. The blue face of the weave reduces any problems with reflected glare during installation.



### Classifications according to AS/NZS 4200.1:1994

Duty Classification: Medium duty  
 Vapour Barrier: Medium  
 Water Barrier: High  
 Emittance of Reflective Face: 0.03  
 Emittance of Antiglare Face: 0.08  
 Flammability Index: ≤ 5 when tested in conformance with AS 1530.2.  
 Tensile Strength Machine Direction (kN/m): Min 9.5  
 Tensile Strength Lateral Direction (kN/m): Min 6.0  
 Edge Tear Resistance Machine Direction (N): Min 65  
 Edge Tear Resistance Lateral Direction (N): Min 65

### Green Star compliant

Fletcher Insulation is committed to providing environmentally sustainable products. Fletcher Insulation™ products have Zero Ozone Depleting Potential in both manufacture and composition, complying with the GreenStar Insulant ODP Emissions credit requirement. Air quality is maintained with Total Volatile Organic Compound (VOC) emissions below quantifiable levels.

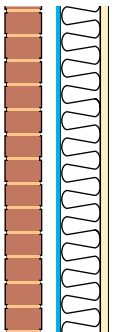
### Thermal performance

Brick Veneer Wall Non-ventilated	Summer	Winter
	Total R2.2	Total R2.5

Calculations incorporate R2.0 wall batts that are no greater than 90mm thick in a 90mm timber stud wall incorporating Sisalation® Wall Wrap MD on the outside of the frame next to a 50mm air cavity. Total R-values excluding the batts are R1.2 (Summer) and R1.3 (Winter).

When used in conjunction with an airspace, Sisalation® reflective foil insulation is an effective thermal insulation material because of the high reflectivity and low emissivity of its aluminium foil surfaces. Sisalation® Wall Wrap MD complies with the requirements of AS/NZS4859.1: 2002, Amendment 1. The contribution of this product to Total R-value depends on installation and adjacent air space.

Comprehensive calculations of Total R-values for typical wall systems is illustrated in the ICANZ Insulation Handbook which can be found at: [http://icanz.org.au/wp-content/uploads/2013/04/17132\\_ICANZ\\_ThermalPerformance.pdf](http://icanz.org.au/wp-content/uploads/2013/04/17132_ICANZ_ThermalPerformance.pdf) or contact Fletcher Insulation® National Customer Service Team 1300 654 444.



## Installation guidance

Sisalation® should be installed in accordance with AS/NZS 4200.2:1994 Pliable building membranes and underlays - Installation Requirements For Metal Roofs, Tile Roofs and Walls.

It should be installed with the antiglare face out and a 150mm overlap between runs. External cladding should be installed without delay. A minimum of 20mm air space is required adjacent to the reflective foil face to achieve the stated Total R-Values.

In wall applications start at a corner, line up the bottom of the wall wrap with the base of the timber bottom plate, cut at a height so that the wall wrap slightly overlaps the window by approximately 50mm. Roll the Sisalation® out to the far end of the subsequent window and affix. Ensure the Sisalation® is cut slightly oversized. Fix the Sisalation® at approximately 150mm to 200mm centres on every stud. Install the next run of wall wrap with a 150mm overlap.

Sisalation® Wall Wrap products are not designed to be used as roof sarking.

When being used as the vapour barrier, it is suggested that the design engineer and/or architect approve the use and placement of these material in their designs.

Foil products conduct electricity. It is important that safety is followed when installing this foil product. As a minimum have your electrician disconnect the electrical supply prior to installation to ensure that the foil is not 'LIVE'. Reconnect the electrical supply after installation with a test to confirm that the foil is not conducting electricity. Under no circumstances should this foil product be applied horizontally in residential ceiling space and under floor. Refer to the Australian / New Zealand Wiring Rules (AS/NZS 3000:2007) for more detailed information.

Important Notes: Prior to and during installation Sisalation® must be kept dry and out of contact with alkaline products, cement and mortar. Sisalation® is not designed to withstand weathering and external cladding should be applied without delay.

## Health and safety

There are no known health or safety risks associated with this product for applications described in this datasheet.

For additional information or to request a Material Safety Data Sheet please visit : [www.insulation.com.au](http://www.insulation.com.au) or contact your nearest Fletcher Insulation office.

## Bushfire Application Areas (BAL)

This product has a Flammability Index not more than 5 and therefore can be used in residential walls for BAL 12.5 to FZ.

## Specification notes

Sisalation® Wall Wrap MD complies with the BCA requirements for sarking type materials. It complies with the requirements of AS/NZS4200.1: 1994 for 'Pliable Building Membranes' which is the deemed to satisfy standard recognised by the BCA Volume 1 and Volume 2. It has a low flammability index (not greater than 5) in accordance with AS1530.2: 1993 which satisfies the BCA volume 2 Part 3.7.1.9 Fire Hazard Properties (Class 1 & 10 Buildings). It also satisfies BCA volume1 Specification C1.10 Fire Hazard Properties (Class 2 to 9 Buildings), as a sarking type material in location other than fire control rooms subjected to Specification E1.8 .

When specifying, state the following:

Application: Wall Wrap

Product Name: Sisalation® Wall Wrap MD.

For further information call **1300 654 444**

Email [info@insulation.com.au](mailto:info@insulation.com.au) Web [www.insulation.com.au](http://www.insulation.com.au)



CERTIFIED SAFETY  
MANAGEMENT SYSTEM  
AS/NZS 4801



CERTIFIED QUALITY  
MANAGEMENT SYSTEM  
ISO 9001



Fletcher®  
Insulation

© Fletcher Insulation 2014. Fletcher Insulation® reserves the right to change product specifications without prior notification. Information in this publication and otherwise supplied to users as to the subject product is based on our general experience and is given in good faith, but because of the many particular factors which are outside our knowledge and control and affect the use of products, no warranty is given or is to be implied with respect to either such information or the product itself, in particular the suitability of the product for any particular purpose. The purchaser should independently determine the suitability of the product for the intended application. ® and ™ are registered trademarks of Fletcher Insulation Pty Limited ABN 72 001 175 355.