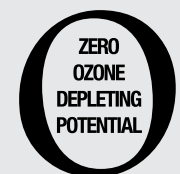


Sisalation Wallwrap® ExHD Breather

Product description and typical applications

Sisalation Wallwrap® ExHD Breather is a single sided extra heavy duty poly weave foil recommended for use as a wall wrap behind permeable light weight cladding such as fibre cement sheet, weatherboard, timber for domestic and commercial buildings. Depending on cladding manufacturing requirements it is suitable for use within external walls whenever the light weight cladding are directly fixed on to the stud frame.

Sisalation Wallwrap® ExHD Breather is a very strong, tear resistant, vapour permeable membrane that prevents the buildup of trapped moisture between the cladding and foil when no air gap exists. It also provides an effective barrier against rain, wind, and dust penetration during construction when overlapped. Sisalation Wallwrap® ExHD Breather is suitable for use in buildings in bushfire prone areas.

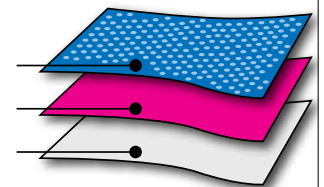


Physical characteristics

Width	Length	Area	Weight
1350mm	60m	81m ²	10kg
1350mm	30m	40.5m ²	7kg

Sisalation Wallwrap® ExHD Breather has a layer of aluminium foil bonded to a polymer based weave of high tensile and tear strength. The blue face of the weave reduces any problems with reflected glare during installation. The composite material is pin perforated to allow free passage of moisture through the membrane preventing condensation within the wall space in cold climates.

Pin-perforated
polycoated
reinforcing
Polymer mesh
Polymer
adhesive
Aluminium foil



Classifications according to AS/NZS 4200.1:1994

Duty Classification: Extra heavy duty
Water Barrier: Unclassified
Vapour Barrier: Low
Emittance of Reflective Face: 0.03
Emittance of Antiglare Face: 0.8
Flammability Index: ≤ 5 when tested in conformance with AS 1530.2.
Tensile Strength Machine Direction (kN/m): Min 13.0
Tensile Strength Lateral Direction (kN/m): Min 10.5
Edge Tear Resistance Machine Direction (N): Min 90
Edge Tear Resistance Lateral Direction (N): Min 90

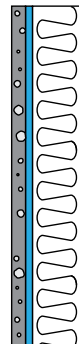
Green Star compliant

Fletcher Insulation is committed to providing environmentally sustainable products. Fletcher Insulation™ products have Zero Ozone Depleting Potential in both manufacture and composition, complying with the GreenStar Insulant ODP Emissions credit requirement. Air quality is maintained with Total Volatile Organic Compound (VOC) emissions below quantifiable levels.

Thermal performance

Brick Veneer Wall Non-ventilated	Summer	Winter
	Total R2.2	Total R2.5

Calculations incorporate R2.0 wall batts that are no greater than 90mm thick in a 90mm timber stud wall incorporating Sisalation Wallwrap® ExHD Breather directly behind external fibre cement sheet cladding. Total R-values excluding the batts are R0.9 (Summer) and R1.0 (Winter). When used in conjunction with an airspace, Sisalation® foil products is an effective thermal insulation material because of the high reflectivity and low emissivity of its aluminium foil surfaces. Sisalation Wallwrap® ExHD Breather complies with the requirements of AS/NZS4859.1. The contribution of this product to Total R-value depends on installation and adjacent air space.



Comprehensive calculations of Total R-values for typical wall systems is illustrated in the ICANZ Insulation Handbook which can be found at: http://icanz.org.au/wp-content/uploads/2013/04/17132_ICANZ_ThermalPerformance.pdf or contact Fletcher Insulation® National Customer Service Team 1300 654 444.

Installation guidance

Sisalation® foil products should be installed in accordance with AS/NZS 4200.2:1994 Pliable building membranes and underlays - Installation Requirements For Metal Roofs, Tile Roofs and Walls.

It should be installed with the antiglare face out and a 150mm overlap between runs. External cladding should be installed without delay. A minimum of 20mm air space is required adjacent to the reflective foil face to achieve the stated Total R Values.

In wall applications start at a corner, line up the bottom of the wall wrap with the base of the timber bottom plate, cut at a height so that the wall wrap slightly overlaps the window by approximately 50mm. Roll the Sisalation® foil products out to the far end of the subsequent window and affix. Ensure the Sisalation® foil products are cut slightly oversized. Fix the Sisalation® foil products at approximately 150mm to 200mm centres on every stud. Install the next run of wall wrap with a 150mm overlap.

Sisalation® Wallwrap products are not designed to be used as roof sarking.

When being used as the vapour barrier, it is suggested that the design engineer and/or architect approve the use and placement of these material in their designs.

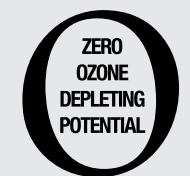
Foil products conduct electricity. It is important that safety is followed when installing this foil product. As a minimum have your electrician disconnect the electrical supply prior to installation to ensure that the foil is not 'LIVE'. Reconnect the electrical supply after installation with a test to confirm that the foil is not conducting electricity. Under no circumstances should this foil product be applied horizontally in residential ceiling space and under floor. Refer to the Australian / New Zealand Wiring Rules (AS/NZS 3000:2007) for more detailed information.

Important Notes: Prior to and during installation Sisalation® foil products must be kept dry and out of contact with alkaline products, cement and mortar. Sisalation® foil products are not designed to withstand weathering and external cladding should be applied without delay.

Health and safety

There are no known health or safety risks associated with this product for applications described in this datasheet.

For additional information or to request a Material Safety Data Sheet please visit: www.insulation.com.au or contact your nearest Fletcher Insulation office.



Bushfire Application Areas (BAL)

This product has a Flammability Index not more than 5 and therefore can be used in residential walls for BAL 12.5 to FZ.

Specification notes

Sisalation Wallwrap® ExHD Breather complies with the BCA requirements for sarking type materials. It complies with the requirements of AS/NZS4200.1: 1994 for 'Pliable Building Membranes' which is the deemed to satisfy standard recognised by the BCA Volume 1 and Volume 2. It has a low flammability index (not greater than 5) in accordance with AS1530.2: 1993 which satisfies the BCA volume 2 Part 3.7.1.9 Fire Hazard Properties (Class 1 & 10 Buildings). It also satisfies BCA volume1 Specification C1.10 Fire Hazard Properties (Class 2 to 9 Buildings), as a sarking type material in location other than fire control rooms subjected to Specification E1.8 .

When specifying, state the following:

Application: Wallwrap

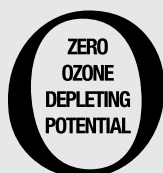
Product Name: Sisalation Wallwrap® ExHD Breather.



CERTIFIED SAFETY
MANAGEMENT SYSTEM
AS/NZS 4801



CERTIFIED QUALITY
MANAGEMENT SYSTEM
ISO 9001



Fletcher®
Insulation

For further information call **1300 654 444**

Email info@insulation.com.au Web www.insulation.com.au

© Fletcher Insulation 2014. Fletcher Insulation® reserves the right to change product specifications without prior notification. Information in this publication and otherwise supplied to users as to the subject product is based on our general experience and is given in good faith, but because of the many particular factors which are outside our knowledge and control and affect the use of products, no warranty is given or is to be implied with respect to either such information or the product itself, in particular the suitability of the product for any particular purpose. The purchaser should independently determine the suitability of the product for the intended application. ® and ™ are registered trademarks of Fletcher Insulation Pty Limited ABN 72 001 175 355.