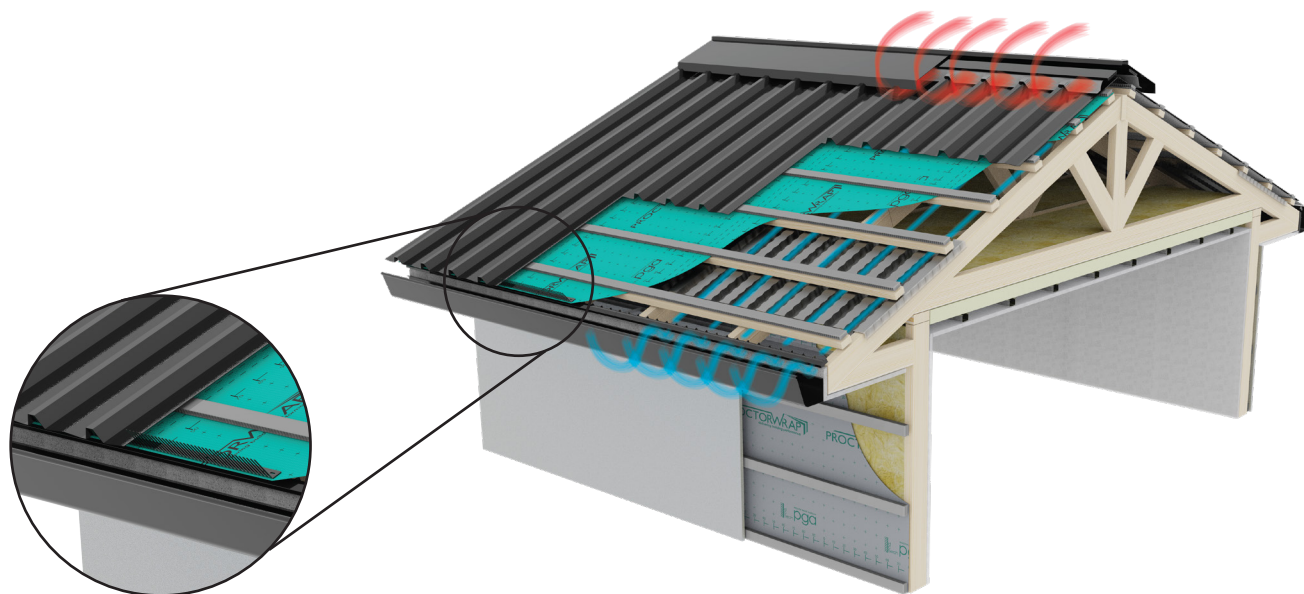


PROCTORVENT Eaves Comb Filler ECF

Eaves Comb Filler



Product Description

The ProctorVent ECF Eaves Comb Filler is designed with flexible fingers that adjust to fill the gaps left when using profiled tiles or metal roofing to restrict the entry of birds and large insects. The use of the ECF eliminates the need for expensive purpose profiled fillers that can block airflow into the roof space between the sarking and roof covering.

Features

- More cost effective than using profiled fillers.
- Compresses to the underside of the roof covering.
- 1m lengths for ease of installation.
- Assists as part of a passive roof ventilation system to release heat from the roof space where the roof sheet profile is ventilated.



Eaves Comb Filler ECF

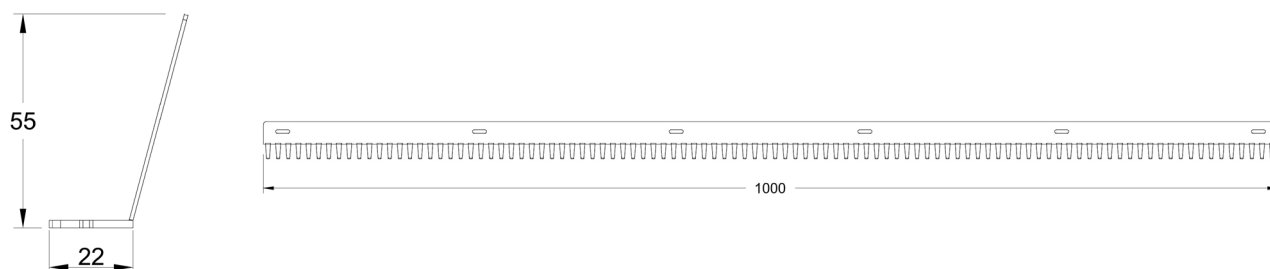
Roof Applications / Scope of use

- Suitable for all roof types including residential, commercial, metal and tiled roofs.
- Suitable for new builds or renovations.

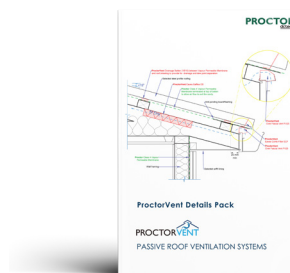
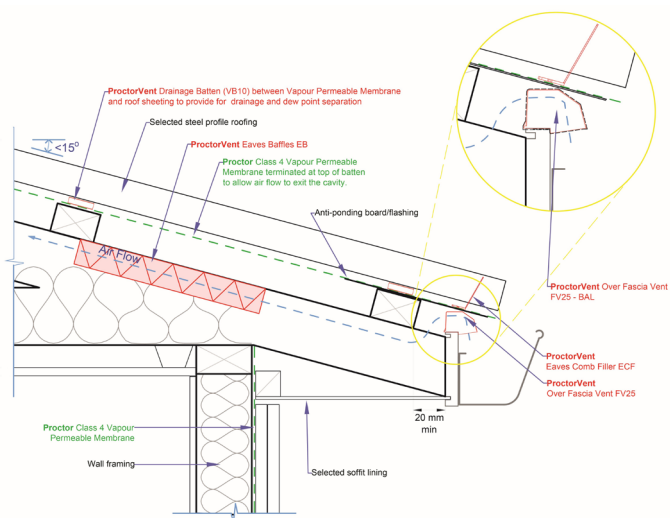
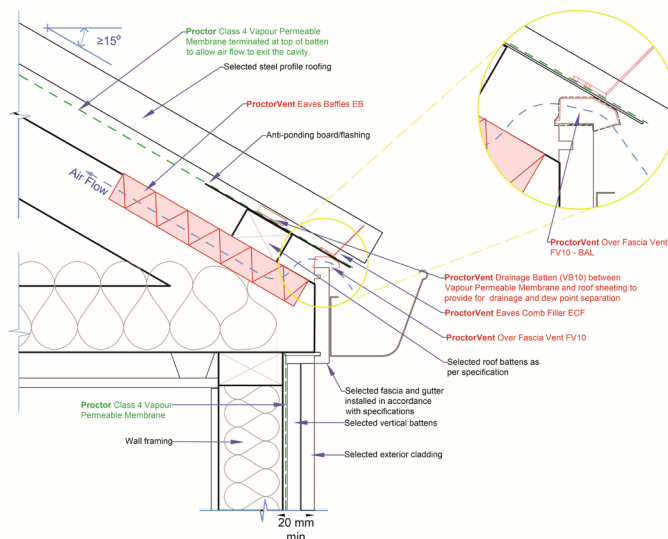
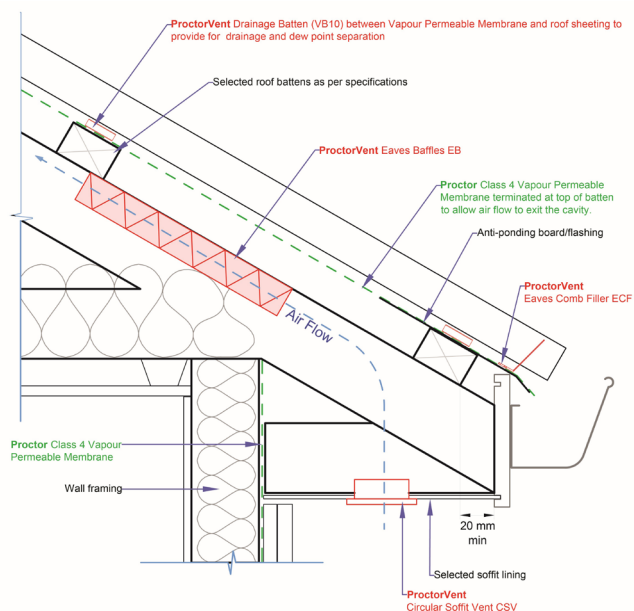
PROCTORVENT Eaves Comb Filler ECF

Eaves Comb Filler

ProctorVent ECF Dimensions



Roof Assembly Drawings



A variety of drawings showing the application of ECF in varied roof assemblies is available on our website in PDF format.



PROCTORVENT Eaves Comb Filler ECF

Eaves Comb Filler

Sample Specification

Eaves comb filler shall be ProctorVent ECF injection moulded polypropylene.

Available from DCTech/Proctor Group Australia.
W: dctech.com.au/contact/

Durability

Although ProctorVent ECF can be left exposed temporarily during construction, the product may be damaged by careless handling or vandalism, and must not be used in installations where it could be exposed to long term UV radiation or constant high temperatures. Any damaged product should be replaced before completion. Ensure that ProctorVent ECF is covered by the roofing as soon as possible.

Warranty

ProctorVent ECF is warranted for 15 years.

Installation

The ProctorVent ECF should be nailed or screwed to the top of the fascia board or over-fascia vent through the fixing holes provided along the full length of the eaves, and joined when necessary. It can be fixed over an underlay eaves support tray if required.

Bush Fire Prone Applications

ProctorVent ECF is not suitable for preventing embers from being drawn into the above sarking cavity and **does not** meet the physical properties required by AS3959-2018 Amdt. 1.

Handling and Storage

Products must be protected from direct sunlight and physical damage, and should be stored flat and under cover.

Health & Safety

Take care when working on roofs and follow all guidance and industry good practice guidelines.

Product Performance

ProctorVent ECF performs to specification in normal building applications when installed in accordance with this product guide. The information herein is supplied in good faith and to the best of our knowledge was accurate at the time of publication. Users are advised to make their own determination as to the suitability of this information in relation to their particular purpose and specific requirements.

Dimensions & Packaging

Product	Eaves Comb Filler Dimensions			Packaging weight and dimension				Eaves Combs Per Pack (total linear metres)	Packs per pallet (Total linear metre)
	Thickness (mm)	Width (mm)	Length (mm)	Height (mm)	Width (mm)	Length (mm)	Weight (kg/box)		
ProctorVent ECF	22	55	1,000	55	230	1,065	3.8	50 (50Lm)	180 (9,000 Lm)