

## BAL Mesh Flexi

Stainless steel mesh for bushfire zones

### Product Description

**Proctor BAL Mesh Flexi** premium stainless steel mesh is designed to meet the requirements of AS 3959:2018, providing effective ember protection for buildings in bushfire-prone areas. It is suitable for use in BAL-12.5 to BAL-FZ zones, helping to reduce the risk of ember ingress while maintaining ventilation.

### Compliance

Across all states, ember protection mesh is required for specific purposes for buildings in bushfire-prone areas with a BAL rating of 12.5 or higher up to BAL- FZ. These requirements as set out in the Australian Standard for the Construction of Buildings in Bushfire Prone Areas - AS 3959 -2018 Amdt 1

Meets the requirements up to BAL 29 as “a mesh or perforated sheet with a maximum aperture of 2 mm, made of corrosion resistant steel, bronze or aluminium”

Made from non-combustible stainless steel, the BAL Mesh Flexi also meets the requirements where required for BAL 40 and BAL-FZ.

### Applications

Proctor BAL Mesh Flexi can be used in common applications such as:

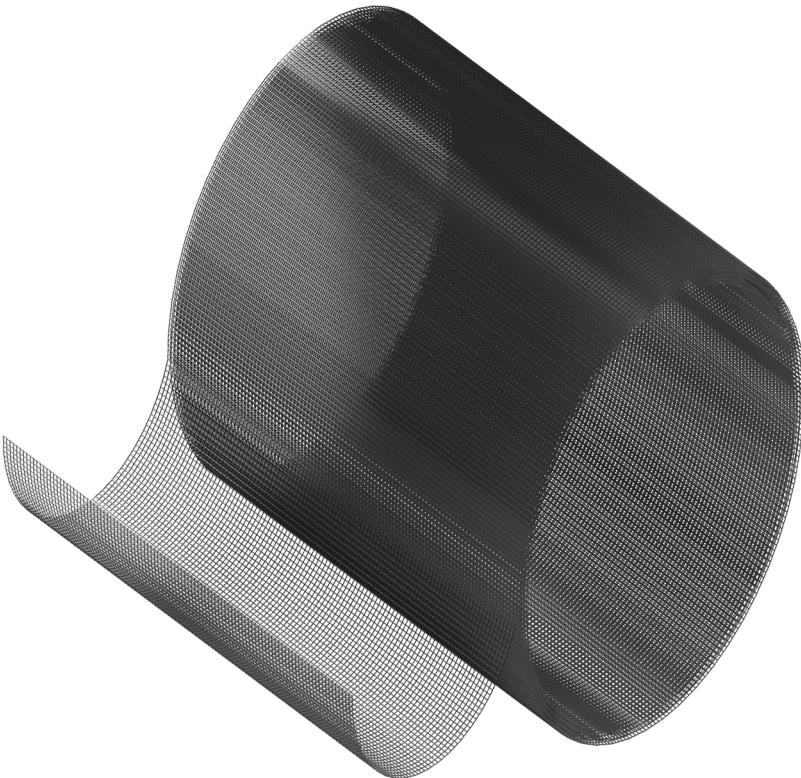
- Ventilation openings
- Window & door screens
- Awnings
- Verandahs
- Soffit & fascia vents
- Weep-holes
- Eaves
- Deckings
- Subfloor spaces
- Ridge vent

### Feature and benefits

- AS 3959 Compliant: Meets Australian Standards for ember protection in bushfire-prone areas.
- Ember & Debris Protection: Reduces the risk of ember ingress with a high 77% open area for minimal impact on airflow.
- Durable & Corrosion-Resistant: High-quality stainless steel with a weather-resistant black powder coating.
- Malleable
- Can be cut with scissors or knife

### Proctor BAL Mesh Flexi Properties

Material	Stainless Steel (black coating)
Opening	1.23 mm x 1.4 mm
Wire Diameter	0.18 mm
Open area	77%
Roll Dimensions	1,000 mm x 15 m
Custom Dimensions	Please enquire regarding custom widths.



Scan the QR code for further details



**PROCTOR**  
dctech

sales @dctech.com.au | 02 8788 9555  
dctech.com.au | proctorgroup.com.au